

AVAILABLE IN BOTH

IMPORT

DOMESTIC

Since  
**STAINLESS STEEL**  
*FLANGES*



# JABO SUPPLY



## 5 LOCATIONS

### **PARKERSBURG, WV**

10085 Emerson Avenue 26102  
(304) 464-4400

### **MORGANFIELD, KY**

118 Jim Veatch Road, 42437  
(270) 389-3430

### **HUNTINGTON, WV**

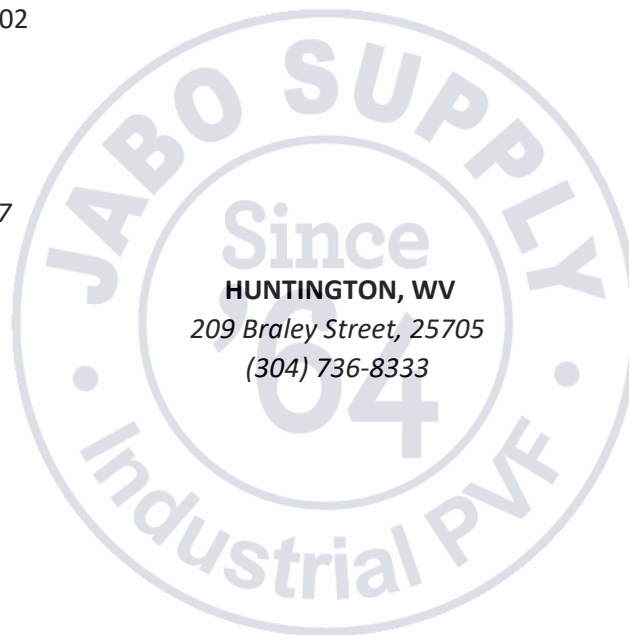
209 Braley Street, 25705  
(304) 736-8333

### **NORTON, VA**

205 Hawthorne Drive, 24273  
(276) 679-1224

### **BEAVER, WV (BECKLEY)**

227 C&O Shop Road 25813  
(304-252-0000



SINCE 1964 SERVICE IS MORE THAN A PROMISE

## INDEX

	PAGE #
Picture Index Import Stainless Steel Flanges	4
Types of Flanges	5
Commonly Asked Questions	6
Difference of Raised Face and Flat Face	7
How to Order a Flange	8
How to Measure a Flange	8
Flange Pressure Chart	9
Dimensions / Bolt Patterns	19-27

## IMPORT STAINLESS STEEL FLANGES

IMPORT STAINLESS STEEL FLANGES					
SPECIFICATION	CLASS RATING	150	150	300	300
	GRADE	304	316	304	316
	PAGE #	PAGE#	PAGE #	PAGE #	PAGE #
A182	Weld Neck Raised Face STD Bore	11	11	*	*
	Weld Neck Flat Face STD Bore	*	*	*	*
	Weld Neck Raised Face XH Bore	*	*	17	*
	Slip On Raised Face	12	12	17	17
	Slip On Flat Face	*	*	*	*
	Threaded Raised Face	13	13	*	17
	Threaded Flat Face	*	*	*	*
	Threaded Reducing Flat Face	*	*	*	*
	Blind Raised Face	14	14	*	*
	Blind Flat Face	*	*	*	*
	Lap (Rotating) Raised Face	15	15	*	*
	Lap (Rotating) Flat Face	*	*	*	*
	Socket Weld Raised Face	16	16	*	*
*NON STOCK					



## DOMESTIC STAINLESS STEEL FLANGES





	PAGE #
Domestic Stainless Steel Flanges (Non Stock)	18

## IMPORT PICTURE INDEX

## CLASS 150

RAISED FACE WELD NECK	RAISED FACE WELD NECK	RAISED FACE SLIP ON	RAISED FACE SLIP ON
304	316	304	316
			
PAGE 11	PAGE 11	PAGE 12	PAGE 12
RAISED FACE THREADED	RAISED FACE THREADED	RAISED FACE REDUCING FLANGE	JABO SUPPLY
304	316	316	(304) 736-8333
			
PAGE 13	PAGE 13	PAGE 13	
RAISED FACE BLIND	RAISED FACE BLIND	LAP (ROTATING)	LAP (ROTATING)
304	316	304	316
			
PAGE 14	PAGE 14	PAGE 15	PAGE 15
RAISED FACE SOCKET WELD	RAISED FACE SOCKET WELD	JABO SUPPLY	JABO SUPPLY
304	316	(304) 736-8333	(304) 736-8333
			
PAGE 16	PAGE 16		

## CLASS 300




RAISED FACE WELD NECK	RAISED FACE SLIP ON	RAISED FACE SLIP ON	RAISED FACE THREADED FLANGE
304	304	316	316
			
PAGE 17	PAGE 17	PAGE 17	PAGE 17




PAGE#



18

DOMESTIC STAINLESS STEEL FLANGES (NON STOCK)

## TYPES OF FLANGES

WELD NECK	SLIP ON	THREADED FLANGE
		
Named for their protruding necks, these bulky flanges share the environmental stress of the pipe to which they are affixed and can, therefore, be used in extreme temperature or pressure situations.	Slip-on flanges slip onto the pipe – and are then welded on both the inside and outside. They're cheap, popular and best used in low-pressure, low-temperature applications.	Threaded pipe flanges are similar in design to slip-ons but has a tapered thread, meaning it can be attached to pipes without welding. Like Slip-on flanges, they're best used in low-pressure, low-temperature environment

BLIND	LAP JOINT	SOCKET WELD
		
Blind flanges don't have a bore and are used to shut off sections of pipe. They're suitable for high-pressure applications, as well as for testing the flow of gas or liquid through a pipe.	Lap Joint Flanges are intended to saddle over a stub end fitting. They feature an extended hub and a machined radius at the base of the flat face.	Typically used on small, high-pressure pipes like hydraulic pipes, socket weld flanges are able to accept pipe into the socket to create the fitting.

AVAIL IN IMPORT		AVAIL IN DOMESTIC		AVAIL IN THE FOLLOWING	
				CALL JABO SUPPLY	<b>SPECS</b> 1. A182 (JABO STOCKS A182)
<b>CALL YOUR CUSTOMER SERVICE REPRESENTATIVE FOR MORE DETAILS</b>					<b>TYPE OF FACE</b> 1. Raised/Flat
					<b>CLASS</b> 150-1500
					*JABO stocking 150/300 with limited larger sizes

## MOST COMMONLY ASKED QUESTIONS

### HOW ARE FLANGES DESCRIBED?

While working with ASME/ANSI Flange, the terms such as Flange Ratings, Flange Pressure Ratings, Flange Class, and pressure-temperature rating of flanges are quite confusing. Below is a breakdown of each terminology used in the industry.

### DIFFERENT TERMINOLOGY FOR FLANGES

The industry refers to flanges in many different ways. Below are a few common ways to refer to a 150 Class Flange.

Class #150

150-pound flange

Class 150 Flange Pressure Rating

150 lb flange

*ALL ARE THE SAME 150 CLASS FLANGE*

PLEASE LET YOUR CSR KNOW  
WHEN ORDERING IF AN MTR IS  
REQUIRED.

### PRESSURE RATING AND OR CLASS

Flanges are broken out into 6 different classes or pound classes

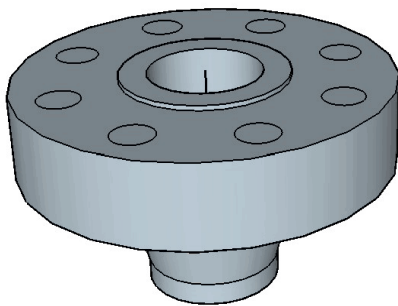
150#	900#
300#	1500#
600#	2500#

**\*This is not the pressure rating of the flange but the pounds per sq inch**

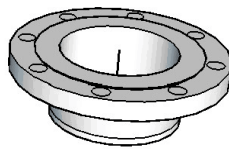
*Pressure rating is defined as **the maximum allowed pressure that a flange can withstand at increasing temperatures**. According to the ANSI/ASME B16.5 specification, there are seven flange pressure ratings: 150, 300, 600, 900, 1500, and 2500*

*The higher the flange ratings, the heavier the flange and can withstand higher pressure and temperature. So, when the temperature goes up for a given material, the maximum allowable pressure goes down, and vice versa. See below for a comparison of 6" Class 150 and Class 2500 weld neck flange.*

### EXAMPLE OF DIFFERENT SIZES



6" Class 2500 Weld Neck Flange

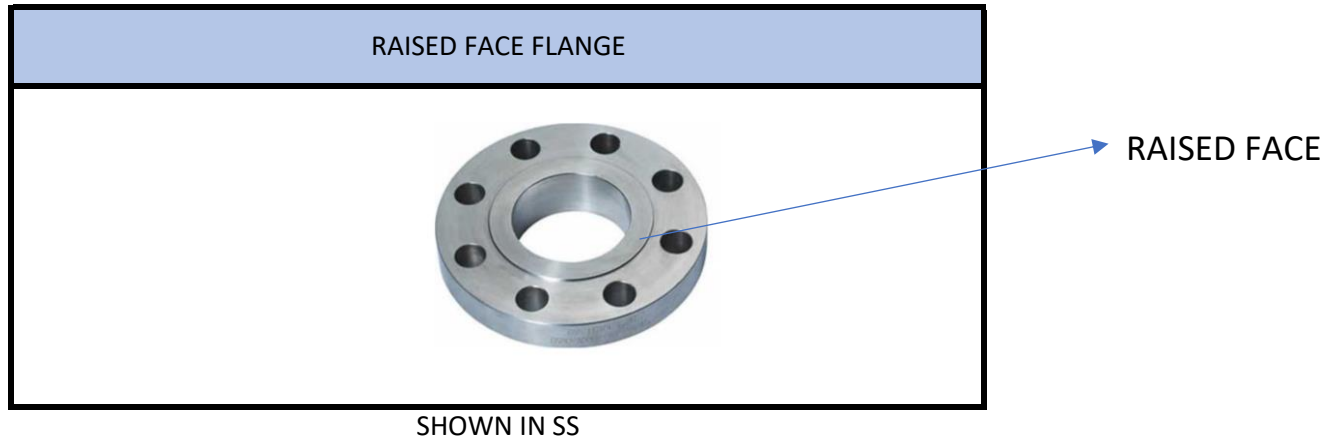


6" Class 150 Weld Neck Flange

## DIFFERENCE BETWEEN RAISED FACE/FLAT FACE

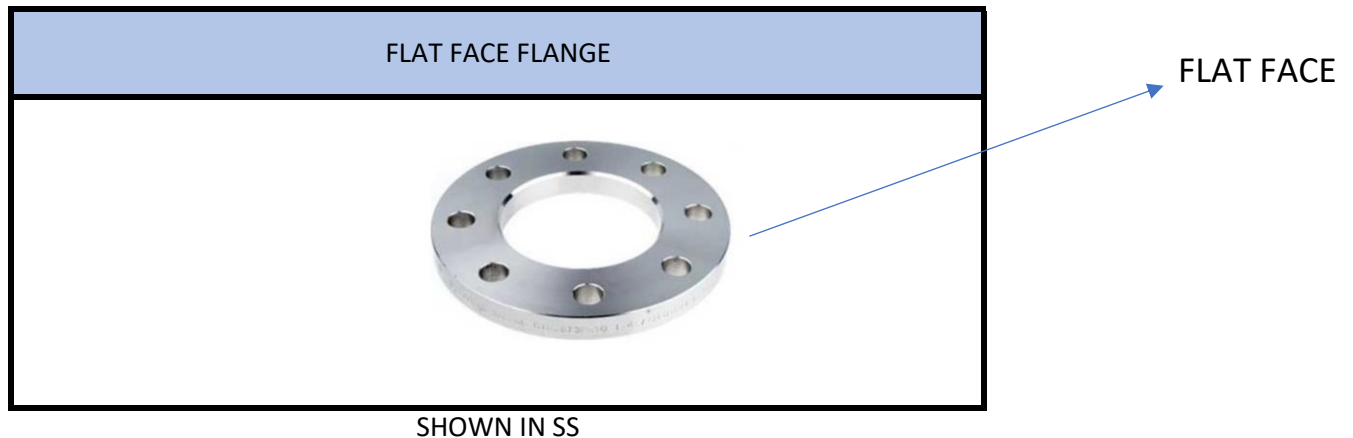
---

### RAISED FACE/FLAT FACE



It is called raised face because the gasket is raised 1/16" to 1/4" above the bolt circle face. This face type allows the use of a wide combination of gasket designs, including flat ring sheet types and metallic composites such as spiral wound and double jacketed types.

The **purpose** of a RF flange is to concentrate more pressure on a smaller gasket area and thereby increase the pressure containment capability of the joint.




The flat face (full face) flange has a gasket surface in the same plane as the bolting circle face.

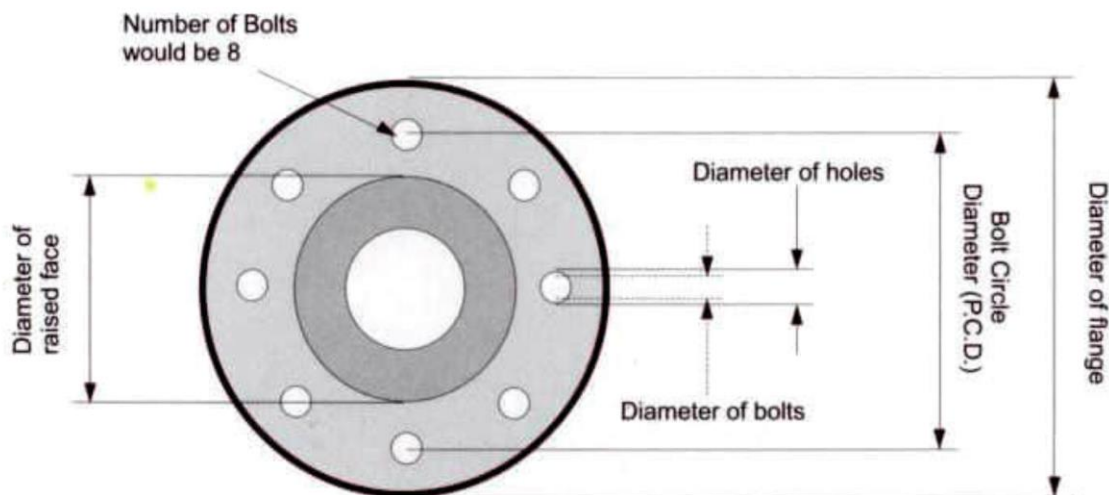
Applications using flat face flanges are frequently those in which the mating flange or flanged fitting is made from a casting.



## HOW TO ORDER A FLANGE

HOW TO ORDER A FLANGE				
1. PROVIDE PART NUMBER TO YOUR JABO CSR				
2. PROVIDE THE BELOW INFORMATION TO YOUR CSR				
CHOOSE ONE FROM EACH COLUMN				
WHERE MFR	TYPE	SIZE	TYPE FACE	RATING
CHOOSE ONE	CHOOSE ONE	CHOOSE SIZE	CHOOSE ONE	CHOOSE ONE
	*WELD NECK	1/2"-48"		150#
	SLIP ON			300#
	**THREADED			600#
	BLIND			900#
1. IMPORT	LAP/ROTATING		1. RAISED FACE	1500#
2. DOMESTIC	SOCKET WELD		2. FLAT FACE	2500#
*When ordering Weld Neck Flanges Please provide bore size (AKA) neck such as sch 40, 80xh etc				
**Threaded Flange can be either size on size or a reducing threaded flange				

## HOW TO MEASURE A FLANGE



MOST COMMON PLACES TO MEASURE - See Flange Dimensions to Determine Size



## PRESSURE RATING CHART

Flanges pressure rating in psig for common carbon steel ASME flanges ( A105 / A350 LF2 / A350 LF3 / A350 LF6)							
Temperature (F°)	150#	300#	400#	600#	900#	1500#	2500#
-20 to 100	285	740	985	1480	2220	3705	6170
200	260	680	905	1360	2035	3395	5655
300	230	655	870	1310	1965	3270	5450
400	200	635	845	1265	1900	3170	5280
500	170	605	805	1205	1810	3015	5025
600	140	570	755	1135	1705	2840	4730
650	125	550	730	1100	1650	2745	4575
700	110	530	710	1060	1590	2655	4425
750	95	505	675	1015	1520	2535	4230
800	80	410	550	825	1235	2055	3430
850	65	320	425	640	955	1595	2655
900	50	230	305	460	690	1150	1915
950	35	135	185	275	410	685	1145
1000	20	85	115	170	255	430	715

The above table shows that in a 150 lb carbon steel flange, the allowable pressure is 285 psi at 100°F, 170 psi at 500°F, and 20 psi at 1000°F. The only temperature at which the flange is rated for 150 psi is near 500°F. Higher class flanges are rated at their nominal pressure rating only at near 850°F. See the cells in yellows.

# IMPORT STAINLESS STEEL *FLANGES*



## ANSI CLASS STAINLESS STEEL PIPE FLANGES (A182)

## CLASS 150 RAISED FACE WELD NECK FLANGES (304 / 316)

## WELD NECK

304

IMPORT



JABO PART#	SIZE
*	1/2"
042-11800	3/4"
042-11820	1"
*	1-1/4"
042-11840	1-1/2"
042-11860	2"
*	2-1/2"
042-11900	3"
*	3-1/2"
042-11920	4"
*	5"
042-11940	6"
*	8"
OTHER SIZES AVAIL UPON REQUEST	
MTR AVAILABLE	

## WELD NECK

316

IMPORT



JABO PART#	SIZE
042-14240	1/2"
042-14260	3/4"
042-14280	1"
*	1-1/4"
042-14300	1-1/2"
042-14320	2"
*	2-1/2"
042-14360	3"
*	3-1/2"
042-14380	4"
*	5"
*	6"
*	8"
OTHER SIZES AVAIL UPON REQUEST	
MTR AVAILABLE	

CLASS 150

**\*NON STOCK CALL JABO SUPPLY**

## ANSI CLASS STAINLESS STEEL PIPE FLANGES (A182)

## CLASS 150 RAISED FACE WELD NECK FLANGES (304 / 316)

## SLIP ON

304

IMPORT



JABO PART#	SIZE
042-00960	1/2"
042-00980	3/4"
042-10000	1"
*	1-1/4"
042-10040	1-1/2"
042-10060	2"
042-10080	2-1/2"
042-10120	3"
*	3-1/2"
042-10140	4"
*	5"
042-10180	6"
042-10200	8"
OTHER SIZES AVAIL UPON REQUEST	
MTR AVAILABLE	

## SLIP ON

316

IMPORT



JABO PART#	SIZE
*	1/2"
042-14020	3/4"
042-14040	1"
*	1-1/4"
042-14060	1-1/2"
042-14080	2"
042-14100	2-1/2"
042-14120	3"
*	3-1/2"
042-14140	4"
*	5"
042-14160	6"
*	8"
OTHER SIZES AVAIL UPON REQUEST	
MTR AVAILABLE	

CLASS 150

**\*NON STOCK CALL JABO SUPPLY**

## ANSI CLASS STAINLESS STEEL PIPE FLANGES (A182)

## CLASS 150 RAISED FACE THREADED FLANGES (304 / 316)

## THREADED FLANGE

304

IMPORT



JABO PART#	SIZE
*	1/2"
*	3/4"
042-13090	1"
*	1-1/4"
042-13091	1-1/2"
042-13092	2"
042-13093	2-1/2"
042-13094	3"
*	3-1/2"
042-13095	4"
*	5"
042-13097	6"
*	8"
OTHER SIZES AVAIL UPON REQUEST	
MTR AVAIL ASK WHEN ORDERING	

## THREADED FLANGE

316

IMPORT



JABO PART#	SIZE
042-15980	1/2"
042-16000	3/4"
042-16020	1"
*	1-1/4"
042-16040	1-1/2"
042-16060	2"
*	2-1/2"
042-16090	3"
*	3-1/2"
042-16120	4"
*	5"
*	6"
*	8"
OTHER SIZES AVAIL UPON REQUEST	
MTR AVAIL ASK WHEN ORDERING	

## REDUCING FLANGE

316

IMPORT



JABO PART#	SIZE
042-30000	1" X 3/4"
042-30005	2" X 3/4"
042-30010	3" X 3/4"
OTHER SIZES ARE AVAIL UPON REQUEST	
304 IS AVAILABLE UPON REQUEST	

## CLASS 150



\*NON STOCK CALL JABO SUPPLY

## ANSI CLASS STAINLESS STEEL PIPE FLANGES (A182)

## CLASS 150 RAISED FACE BLIND FLANGES (304 / 316)

**BLIND****304**

IMPORT



JABO PART#	SIZE
*	1/2"
*	3/4"
042-12320	1"
*	1-1/4"
042-12340	1-1/2"
042-12360	2"
042-12380	2-1/2"
042-12400	3"
*	3-1/2"
042-12420	4"
*	5"
042-12440	6"
*	8"
OTHER SIZES AVAIL UPON REQUEST	
MTR AVAIL ASK WHEN ORDERING	

**BLIND****316**

IMPORT



JABO PART#	SIZE
042-14960	1/2"
042-14980	3/4"
042-15000	1"
*	1-1/4"
042-15020	1-1/2"
042-15040	2"
*	2-1/2"
042-15080	3"
*	3-1/2"
042-15100	4"
*	5"
042-15140	6"
*	8"
OTHER SIZES AVAIL UPON REQUEST	
MTR AVAIL ASK WHEN ORDERING	

**CLASS 150****\*NON STOCK CALL JABO SUPPLY**

## ANSI CLASS STAINLESS STEEL PIPE FLANGES (A182)

## CLASS 150 RAISED FACE LAP (ROTATING) FLANGES (304 / 316)

## LAP (ROTATING)

304

IMPORT



JABO PART#	SIZE
*	1/2"
*	3/4"
042-13010	1"
*	1-1/4"
042-13030	1-1/2"
042-13040	2"
*	2-1/2"
042-13060	3"
*	3-1/2"
042-13070	4"
*	5"
042-13080	6"
*	8"
OTHER SIZES AVAIL UPON REQUEST	
MTR AVAIL ASK WHEN ORDERING	

## LAP (ROTATING)

316

IMPORT



JABO PART#	SIZE
*	1/2"
*	3/4"
042-15210	1"
*	1-1/4"
042-15230	1-1/2"
042-15250	2"
*	2-1/2"
042-15270	3"
*	3-1/2"
042-15290	4"
*	5"
042-15292	6"
*	8"
OTHER SIZES AVAIL UPON REQUEST	
MTR AVAIL ASK WHEN ORDERING	

CLASS 150

**\*NON STOCK CALL JABO SUPPLY**



## ANSI CLASS STAINLESS STEEL PIPE FLANGES (A182)

## CLASS 150 RAISED FACE SOCKET WELD FLANGES (304 / 316)

## SOCKET WELD

304

IMPORT



JABO PART#	SIZE
042-12600	1/2"
042-12620	3/4"
042-12640	1"
*	1-1/4"
042-12660	1-1/2"
042-12680	2"
*	2-1/2"
*	3"
*	3-1/2"
*	4"
*	5"
*	6"
*	8"
OTHER SIZES AVAIL UPON REQUEST	
MTR AVAIL ASK WHEN ORDERING	

## SOCKET WELD

316

IMPORT



JABO PART#	SIZE
042-16200	1/2"
042-16202	3/4"
042-16204	1"
*	1-1/4"
*	1-1/2"
*	2"
*	2-1/2"
*	3"
*	3-1/2"
*	4"
*	5"
*	6"
*	8"
OTHER SIZES AVAIL UPON REQUEST	
MTR AVAIL ASK WHEN ORDERING	

CLASS 150

**\*NON STOCK CALL JABO SUPPLY**

## ANSI CLASS STAINLESS STEEL PIPE FLANGES (A182)

## CLASS 300 RAISED FACE WELD NECK / SLIP ON FLANGES (304 / 316)

## WELD NECK XH BORE

304

IMPORT



JABO PART#	SIZE
*	1/2"
042-40020	3/4"
042-40021	1"
*	1-1/4"
042-40023	1-1/2"
042-40024	2"
042-40025	2-1/2"
*	3"
*	3-1/2"
*	4"
*	5"
*	6"
*	8"
OTHER SIZES AVAIL UPON REQUEST	
MTR AVAIL ASK WHEN ORDERING	

## SLIP ON

304

IMPORT



JABO PART#	SIZE
*	1/2"
042-40000	3/4"
042-40001	1"
	1-1/4"
042-40003	1-1/2"
042-40004	2"
042-40005	2-1/2"
	3"
042-40006	3-1/2"
	4"
	5"
	6"
	8"
OTHER SIZES AVAIL UPON REQUEST	
MTR AVAIL ASK WHEN ORDERING	

## SLIP ON

316

IMPORT



JABO PART#	SIZE
*	1/2"
042-20000	3/4"
042-20002	1"
042-20004	1-1/4"
042-20006	1-1/2"
042-20008	2"
*	2-1/2"
042-20010	3"
*	3-1/2"
042-20012	4"
*	5"
042-20014	6"
*	8"
OTHER SIZES AVAIL UPON REQUEST	
MTR AVAIL ASK WHEN ORDERING	

## THREADED FLANGE

316

IMPORT



JABO PART#	SIZE
042-20500	1"
1/2"-8" AVAILABLE FROM MANUFACTURE	

CLASS 300



\*NON STOCK CALL JABO SUPPLY

# DOMESTIC STAINLESS STEEL FLANGES



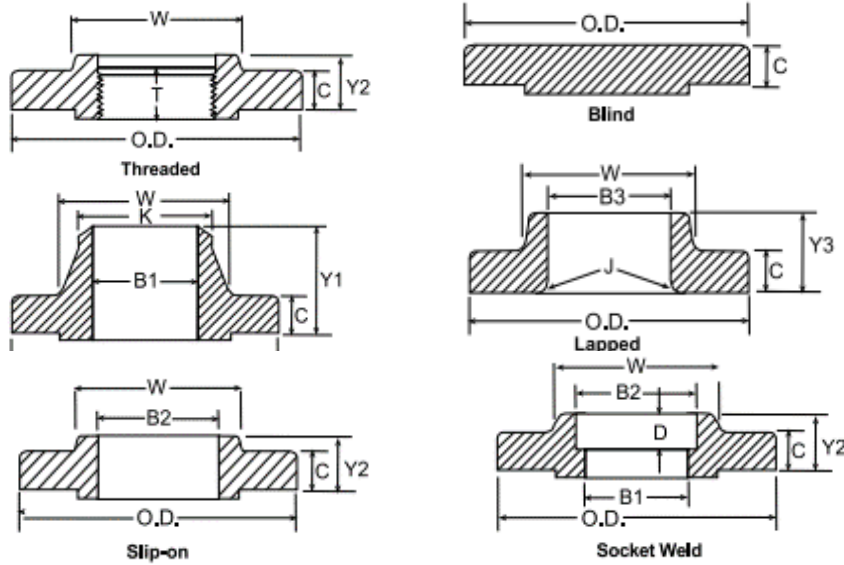
## **ALL DOMESTIC STAINLESS STEEL FLANGES ARE NON STOCK**

***CALL YOUR JABO CSR AND ASK FOR THE FOLLOWING***

1. DOMESTIC STAINLESS STEEL FLANGE
2. RAISED FACE / FLAT FACE
3. TYPE OF FLANGE
4. GRADE (304/316)
5. CLASS- 150-300-600 ETC

**CLASS 150 FLANGE DIMENSIONS**

PROVIDED BY WELDBEND CATALOG



Pipe Size	Outside Diameter of Flange	Thickness of Flange (Min.)	Thickness of Lap Joint (Min.)	Diameter of Hub*	Diameter of Weld Neck	Length Through Hub			Thread Length (Min.)	Bore			Lap Joint Radius	Depth of Socket
						Threaded, Slip-on & Socket Weld (Min.)	Lap Joint	Weld Neck		Slip-on & Socket Weld (Min.)	Lap Joint (Min.)	Weld Neck & Socket Weld (Min.)		
ASME B16.5														
½	3.50	0.38	0.44	1.19	0.84	0.56	0.62	1.81	0.62	0.88	0.90	0.62	0.12	0.38
¾	3.88	0.44	0.50	1.50	1.05	0.56	0.62	2.00	0.62	1.09	1.11	0.82	0.12	0.44
1	4.25	0.50	0.56	1.94	1.32	0.62	0.69	2.12	0.69	1.36	1.38	1.05	0.12	0.50
1 ¼	4.62	0.56	0.62	2.31	1.66	0.75	0.81	2.19	0.81	1.70	1.72	1.38	0.19	0.56
1 ½	5.00	0.62	0.69	2.56	1.90	0.81	0.88	2.38	0.88	1.95	1.97	1.61	0.25	0.62
2	6.00	0.69	0.75	3.06	2.38	0.94	1.00	2.44	1.00	2.44	2.46	2.07	0.31	0.69
2 ½	7.00	0.81	0.88	3.56	2.88	1.06	1.12	2.69	1.12	2.94	2.97	2.47	0.31	0.75
3	7.50	0.88	0.94	4.25	3.50	1.12	1.19	2.69	1.19	3.57	3.60	3.07	0.38	0.81
3 ½	8.50	0.88	0.94	4.81	4.00	1.19	1.25	2.75	1.25	4.07	4.10	3.55	0.38	0.50
4	9.00	0.88	0.94	5.31	4.50	1.25	1.31	2.94	1.31	4.57	4.60	4.03	0.44	
5	10.00	0.88	0.94	6.44	5.56	1.38	1.44	3.44	1.44	5.66	5.69	5.05	0.44	
6	11.00	0.94	1.00	7.56	6.63	1.50	1.56	3.44	1.56	6.72	6.75	6.07	0.50	
8	13.50	1.06	1.12	9.69	8.63	1.69	1.75	3.94	1.75	8.72	8.75	7.98	0.50	
10	16.00	1.12	1.19	12.00	10.75	1.88	1.94	3.94	1.94	10.88	10.92	10.02	0.50	
12	19.00	1.19	1.25	14.38	12.75	2.12	2.19	4.44	2.19	12.88	12.92	12.00	0.50	
14	21.00	1.31	1.38	15.75	14.00	2.19	3.12	4.94	2.25	14.14	14.18	13.25	0.50	
16	23.50	1.38	1.44	18.00	16.00	2.44	3.44	4.94	2.50	16.16	16.19	15.25	0.50	
18	25.00	1.50	1.56	19.88	18.00	2.62	3.81	5.44	2.69	18.18	18.20	17.25	0.50	
20	27.50	1.62	1.69	22.00	20.00	2.81	4.06	5.62	2.88	20.20	20.25	19.25	0.50	
24	32.00	1.81	1.88	26.12	24.00	3.19	4.38	5.94	3.25	24.25	24.25	23.25	0.50	

**CLASS 150 FLANGE WEIGHTS**

PROVIDED BY WELDBEND CATALOG

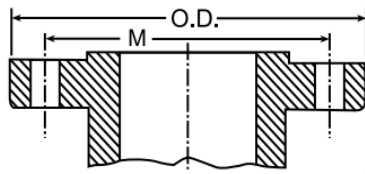
<b>CLASS 150</b>					
Pipe Size	Outside Diameter	Threaded & Slip-on	Weld Neck	Blind	Lap Joint
	O.D.				

**ASME B16.5**

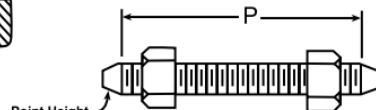
½	3.50	2.00	2.00	2.00	1.00
¾	3.88	2.00	2.00	2.00	2.00
1	4.25	2.00	3.00	2.00	2.00
1 ¼	4.62	3.00	3.00	3.00	3.00
1 ½	5.00	3.00	4.00	4.00	3.00
2	6.00	5.00	6.00	5.00	5.00
2 ½	7.00	8.00	10.00	7.00	8.00
3	7.50	9.00	11.50	9.00	9.00
3 ½	8.50	12.00	12.00	13.00	11.00
4	9.00	13.00	16.50	17.00	13.00
5	10.00	15.00	21.00	20.00	15.00
6	11.00	19.00	26.00	27.00	19.00
8	13.50	30.00	42.00	47.00	30.00
10	16.00	43.00	54.00	70.00	43.00
12	19.00	64.00	88.00	123.00	64.00
14	21.00	90.00	114.00	140.00	105.00
16	23.50	106.00	140.00	180.00	140.00
18	25.00	130.00	165.00	220.00	160.00
20	27.50	165.00	197.00	285.00	195.00
24	32.00	220.00	268.00	430.00	275.00

## CLASS 300 FLANGE BOLT PATTERN AND LENGTH

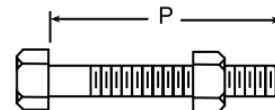
PROVIDED BY WELDBEND CATALOG



Flange



Stud Bolt



Machine Bolt

Bolting Pattern and Bolt Lengths								
Pipe Size	Outside Diameter	Drilling				Length of Bolts		
		Diameter of Bolt Circle	Diameter of Bolt Holes	Number of Bolt Holes	Diameter of Bolts	Stud Bolts Raised Face 0.06 in.	Stud Bolts Ring Joint	Machine Bolts Raised Face 0.06 in.
	O.D.	M				P	P	P

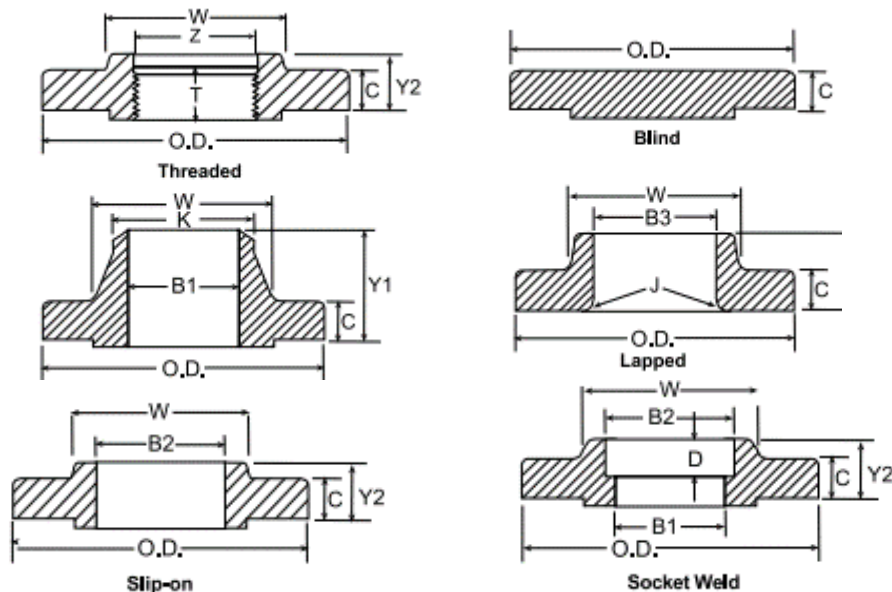
### ASME B16.5

1/2	3.75	2.62	5/8	4	1/2	2.50	3.00	2.25
3/4	4.62	3.25	3/4	4	5/8	3.00	3.50	2.50
1	4.88	3.50	3/4	4	5/8	3.00	3.50	2.50
1 1/4	5.25	3.88	3/4	4	5/8	3.25	3.75	2.75
1 1/2	6.12	4.50	7/8	4	3/4	3.50	4.00	3.00
2	6.50	5.00	3/4	8	5/8	3.50	4.00	3.00
2 1/2	7.50	5.88	7/8	8	3/4	4.00	4.50	3.25
3	8.25	6.62	7/8	8	3/4	4.25	4.75	3.50
3 1/2	9.00	7.25	7/8	8	3/4	4.25	5.00	3.75
4	10.00	7.88	7/8	8	3/4	4.50	5.00	3.75
5	11.00	9.25	7/8	8	3/4	4.75	5.25	4.25
6	12.50	10.62	7/8	12	3/4	4.75	5.50	4.25
8	15.00	13.00	1	12	7/8	5.50	6.00	4.75
10	17.50	15.25	1 1/8	16	1	6.25	6.75	5.50
12	20.50	17.75	1 1/4	16	1 1/8	6.75	7.25	5.75
14	23.00	20.25	1 1/4	20	1 1/8	7.00	7.50	6.25
16	25.50	22.50	1 3/8	20	1 1/4	7.50	8.00	6.50
18	28.00	24.75	1 3/8	24	1 1/4	7.75	8.25	6.75
20	30.50	27.00	1 3/8	24	1 1/4	8.00	8.75	7.25
24	36.00	32.00	1 5/8	24	1 1/2	9.00	10.00	8.00



## CLASS 300 FLANGE DIMENSIONS

PROVIDED BY WELDBEND CATALOG



Pipe Size	Outside Diameter of Flange	Thickness of Flange (Min.)	Thickness of Lap Joint (Min.)	Diameter of Hub*	Diameter of Weld Neck	Length Through Hub			Thread Length (Min.)	Bore			Lap Joint Radius	Min. Counter Bore Threaded Flange	Depth of Socket
						Threaded, Slip-on & Socket Weld	Lap Joint	Weld Neck		Slip-on & Socket Weld (Min.)	Lap Joint (Min.)	Weld Neck & Socket Weld			
	O.D.	C	C	W	K	Y2	Y3	Y1	T	B2	B3	B1 ▲	J	Z	D

### ASME B16.5

½	3.75	0.50	0.56	1.50	0.84	0.81	0.88	2.00	0.62	0.88	0.90	0.62	0.12	0.93	0.38
¾	4.62	0.56	0.62	1.88	1.05	0.94	1.00	2.19	0.62	1.09	1.11	0.82	0.12	1.14	0.44
1	4.88	0.62	0.69	2.12	1.32	1.00	1.06	2.38	0.69	1.36	1.38	1.05	0.12	1.41	0.50
1 ¼	5.25	0.69	0.75	2.50	1.66	1.00	1.06	2.50	0.81	1.70	1.72	1.38	0.19	1.75	0.56
1 ½	6.12	0.75	0.81	2.75	1.90	1.13	1.19	2.63	0.88	1.95	1.97	1.61	0.25	1.98	0.62
2	6.50	0.81	0.88	3.31	2.38	1.25	1.31	2.69	1.12	2.44	2.46	2.07	0.31	2.50	0.69
2 ½	7.50	0.94	1.00	3.94	2.88	1.44	1.50	2.94	1.25	2.94	2.97	2.47	0.31	3.00	0.75
3	8.25	1.06	1.12	4.62	3.50	1.63	1.69	3.06	1.25	3.57	3.60	3.07	0.38	3.63	0.81
3 ½	9.00	1.12	1.19	5.25	4.00	1.69	1.75	3.13	1.44	4.07	4.10	3.55	0.38	4.13	
4	10.00	1.19	1.25	5.75	4.50	1.82	1.88	3.32	1.44	4.57	4.60	4.03	0.44	4.63	
5	11.00	1.31	1.38	7.00	5.56	1.94	2.00	3.82	1.69	5.66	5.69	5.05	0.44	5.69	
6	12.50	1.38	1.44	8.12	6.63	2.00	2.06	3.82	1.81	6.72	6.75	6.07	0.50	6.75	
8	15.00	1.56	1.62	10.25	8.63	2.38	2.44	4.32	2.00	8.72	8.75	7.98	0.50	8.75	
10	17.50	1.81	1.88	12.62	10.75	2.56	3.75	4.56	2.19	10.88	10.92	10.02	0.50	10.88	
12	20.50	1.94	2.00	14.75	12.75	2.82	4.00	5.06	2.38	12.88	12.92	12.00	0.50	12.94	
14	23.00	2.06	2.12	16.75	14.00	2.94	4.38	5.56	2.50	14.14	14.18	13.25	0.50	14.19	
16	25.50	2.19	2.25	19.00	16.00	3.19	4.75	5.69	2.69	16.16	16.19	15.25	0.50	16.19	
18	28.00	2.31	2.38	21.00	18.00	3.44	5.12	6.19	2.75	18.18	18.20	17.25	0.50	18.19	
20	30.50	2.44	2.50	23.12	20.00	3.69	5.50	6.32	2.88	20.20	20.25	19.25	0.50	20.19	
24	36.00	2.69	2.75	27.62	24.00	4.13	6.00	6.56	3.25	24.25	24.25	23.25	0.50	24.19	



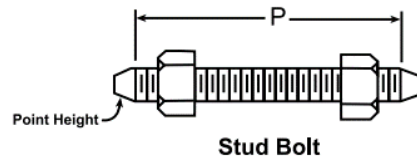
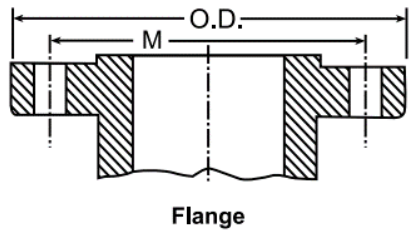
**CLASS 300 FLANGE WEIGHTS**

PROVIDED BY WELD BEND CATALOG

CLASS 300					
Pipe Size	Outside Diameter	Threaded & Slip-on	Weld Neck	Blind	Lap Joint
	O.D.				
ASME B16.5					
½	3.75	3.00	2.00	2.00	2.00
¾	4.62	3.00	3.00	3.00	3.00
1	4.88	3.00	4.00	4.00	3.00
1 ¼	5.25	4.50	5.00	6.00	4.50
1 ½	6.12	6.50	7.00	7.00	6.50
2	6.50	7.00	9.00	8.00	7.00
2 ½	7.50	10.00	12.00	12.00	10.00
3	8.25	14.00	18.00	16.00	14.00
3 ½	9.00	17.00	20.00	21.00	17.00
4	10.00	24.00	26.50	28.00	24.00
5	11.00	31.00	36.00	37.00	28.00
6	12.50	39.00	45.00	50.00	39.00
8	15.00	58.00	69.00	81.00	58.00
10	17.50	81.00	100.00	124.00	91.00
12	20.50	115.00	142.00	185.00	140.00
14	23.00	165.00	206.00	250.00	190.00
16	25.50	220.00	250.00	315.00	234.00
18	28.00	280.00	320.00	415.00	305.00
20	30.50	325.00	400.00	515.00	375.00
24	36.00	490.00	580.00	800.00	550.00

## CLASS 600 FLANGE BOLT PATTERN & LENGTH

PROVIDED BY WELDBEND CATALOG



**Bolting Pattern and Bolt Lengths**

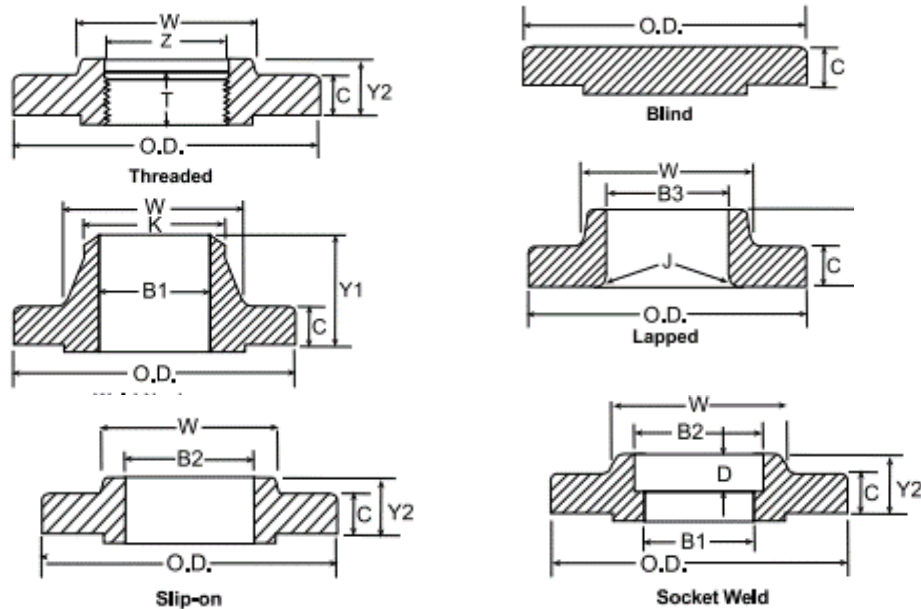
Pipe Size	Outside Diameter	Drilling				Length of Bolts		
		Diameter of Bolt Circle	Diameter of Bolt Holes	Number of Bolt Holes	Diameter of Bolts	Raised Face 0.25 in.	Male & Female / Tongue & Groove	Ring Joint
	O.D.	M				P	P	P

### ASME B16.5

1/2	3.75	2.62	5/8	4	1/2	3.00	2.75	3.00
3/4	4.62	3.25	3/4	4	5/8	3.50	3.25	3.50
1	4.88	3.50	3/4	4	5/8	3.50	3.25	3.50
1 1/4	5.25	3.88	3/4	4	5/8	3.75	3.50	3.75
1 1/2	6.12	4.50	7/8	4	3/4	4.25	4.00	4.25
2	6.50	5.00	3/4	8	5/8	4.25	4.00	4.25
2 1/2	7.50	5.88	7/8	8	3/4	4.75	4.50	4.75
3	8.25	6.62	7/8	8	3/4	5.00	4.75	5.00
3 1/2	9.00	7.25	1	8	7/8	5.50	5.25	5.50
4	10.75	8.50	1	8	7/8	5.75	5.50	5.75
5	13.00	10.50	1 1/8	8	1	6.50	6.25	6.50
6	14.00	11.50	1 1/8	12	1	6.75	6.50	6.75
8	16.50	13.75	1 1/4	12	1 1/8	7.50	7.25	7.75
10	20.00	17.00	1 3/8	16	1 1/4	8.50	8.25	8.50
12	22.00	19.25	1 3/8	20	1 1/4	8.75	8.50	8.75
14	23.75	20.75	1 1/2	20	1 3/8	9.25	9.00	9.25
16	27.00	23.75	1 5/8	20	1 1/2	10.00	9.75	10.00
18	29.25	25.75	1 3/4	20	1 5/8	10.75	10.50	10.75
20	32.00	28.50	1 3/4	24	1 5/8	11.25	11.00	11.50
24	37.00	33.00	2	24	1 7/8	13.00	12.75	13.25

## CLASS 600 FLANGE DIMENSIONS

PROVIDED BY WELDBEND CATALOG



Pipe Size	Outside Diameter of Flange	Thickness of Flange (Min.)	Diameter of Hub*	Diameter of Weld Neck	Length Through Hub			Thread Length (Min.)	Bore			Lapped Flange Radius	Min. Counter Bore Threaded Flange	Depth of Socket
					Threaded, Slip-on & Socket Weld	Lap Joint	Weld Neck		Slip-on & Socket Weld (Min.)	Lap Joint (Min.)	Weld Neck & Socket Weld			
	O.D.	C	W	K	Y2	Y3	Y1	T	B2	B3	B1 ▲	J	Z	D

### ASME B16.5

½	3.75	0.56	1.50	0.84	0.88	0.88	2.06	0.62	0.88	0.90	.55	0.12	0.93	0.38
¾	4.62	0.62	1.88	1.05	1.00	1.00	2.25	0.62	1.09	1.11	.74	0.12	1.14	0.44
1	4.88	0.69	2.12	1.32	1.06	1.06	2.44	0.69	1.36	1.38	.96	0.12	1.41	0.50
1 ¼	5.25	0.81	2.50	1.66	1.12	1.12	2.62	0.81	1.70	1.72	1.28	0.19	1.75	0.56
1 ½	6.12	0.88	2.75	1.90	1.25	1.25	2.75	0.88	1.95	1.97	1.50	0.25	1.99	0.62
2	6.50	1.00	3.31	2.38	1.44	1.44	2.88	1.12	2.44	2.46	1.94	0.31	2.50	0.69
2 ½	7.50	1.12	3.94	2.88	1.62	1.62	3.12	1.25	2.94	2.97	2.32	0.31	3.00	0.75
3	8.25	1.25	4.62	3.50	1.81	1.81	3.25	1.38	3.57	3.60	2.90	0.38	3.63	0.81
3 ½	9.00	1.38	5.25	4.00	1.94	1.94	3.38	1.56	4.07	4.10	3.36	0.38	4.13	
4	10.75	1.50	6.00	4.50	2.12	2.12	4.00	1.62	4.57	4.60	3.83	0.44	4.63	
5	13.00	1.75	7.44	5.56	2.38	2.38	4.50	1.88	5.66	5.69	4.81	0.44	5.69	
6	14.00	1.88	8.75	6.63	2.62	2.62	4.62	2.00	6.72	6.75	5.76	0.50	6.75	
8	16.50	2.19	10.75	8.63	3.00	3.00	5.25	2.25	8.72	8.75	7.63	0.50	8.75	
10	20.00	2.50	13.50	10.75	3.38	4.38	6.00	2.56	10.88	10.92	9.75	0.50	10.88	
12	22.00	2.62	15.75	12.75	3.62	4.62	6.12	2.75	12.88	12.92	11.75	0.50	12.94	
14	23.75	2.75	17.00	14.00	3.69	5.00	6.50	2.88	14.14	14.18	13.00	0.50	14.19	
16	27.00	3.00	19.50	16.00	4.19	5.50	7.00	3.06	16.16	16.19	15.00	0.50	16.19	
18	29.25	3.25	21.50	18.00	4.62	6.00	7.25	3.12	18.18	18.20	17.00	0.50	18.19	
20	32.00	3.50	24.00	20.00	5.00	6.50	7.50	3.25	20.20	20.25	19.00	0.50	20.19	
24	37.00	4.00	28.25	24.00	5.50	7.25	8.00	3.62	24.25	24.25	23.00	0.50	24.19	

**CLASS 600 FLANGE WEIGHTS**

PROVIDED BY WELDBEND CATALOG

CLASS 600					
Pipe Size	Outside Diameter	Threaded & Slip-on	Weld Neck	Blind	Lap Joint
	O.D.				
ASME B16.5					
½	3.75	2.00	3.00	3.00	2.00
¾	4.62	3.00	4.00	4.00	3.00
1	4.88	4.00	4.00	4.00	4.00
1 ¼	5.25	5.00	6.00	6.00	5.00
1 ½	6.12	7.00	8.00	8.00	7.00
2	6.50	9.00	12.00	10.00	9.00
2 ½	7.50	13.00	18.00	15.00	12.00
3	8.25	16.00	23.00	20.00	15.00
3 ½	9.00	21.00	26.00	29.00	20.00
4	10.75	37.00	42.00	41.00	36.00
5	13.00	63.00	68.00	68.00	63.00
6	14.00	80.00	81.00	86.00	78.00
8	16.50	115.00	120.00	140.00	112.00
10	20.00	177.00	190.00	231.00	195.00
12	22.00	215.00	226.00	295.00	240.00
14	23.75	259.00	347.00	378.00	290.00
16	27.00	366.00	481.00	527.00	400.00
18	29.25	476.00	555.00	665.00	469.00
20	32.00	612.00	690.00	855.00	604.00
24	37.00	876.00	977.00	1250.00	866.00



# STAINLESS STEEL FLANGES



JABO SUPPLY SINCE 1964 SERVICE IS MORE THAN A PROMISE  
(304)-736-8333