

JABO SUPPLY

PRV

Pressure Reducing Valves



SINCE 1964 SINCE IS MORE THAN A PROMISE



5 LOCATIONS

PARKERSBURG, WV

10085 Emerson Avenue 26102
(304) 464-4400

NORTON, VA

205 Hawthorne Drive, 24273
(276) 679-1224

HUNTINGTON, WV

209 Braley Street, 25705
(304) 736-8333

MORGANFIELD, KY

118 Jim Veatch Road, 42437
(270) 389-3430

BEAVER, WV (BECKLEY)

227 C&O Shop Road 25813
(304) 252-0000

SINCE 1964 SERVICE IS MORE THAN A PROMISE

PICTUE INDEX ZURN-WILKINS PRV

DESCRIPTION	PAGE #
PICTURE INDEX (Pages 4-5)	
PICTURE INDEX ZURN	4
PICTURE INDEX APOLLO	5
ZURN -WILKINS (Pages 6-12)	
MODEL 600XL	7-8
*Spec Sheet	7
*Jabo # 600XL	8
*Jabo # 600XLHR	8
*Jabo # 600XLDM	8
*Jabo # 600XLDMLR	8
*Jabo # 600XLLUSC	8
*Jabo # 600XLHRLUSC	8
MODEL NR3XL	9-10
*Spec Sheet	9
*NR3XL STANDARD	10
APOLLO (Pages 13-20)	
*Specification sheet Model 36CLF	14-15
*Specification sheet Model 36LF	16-17
*JABO # Model 36CLF	18
*jABO # Model 36LF	18



PICTURE INDEX

ZURN MODEL 600XL



		600XL	600XLHR
			
CALL JABO SUPPLY (304) 736-8333		Page 8	Page 8
600XL LUSC	600XLHRLUSC	600XLDM	600XLDMHLR
			
Page 8	Page 8	Page 8	Page 8

ZURN MODEL NR3XL

NR3XL STANDARD

Page 10

PICTURE INDEX APOLLO

APOLLO 36CLF



36CLF	36LF
	
Page 18	Page 18

CALL JABO SUPPLY (304) 736-8333



JABO SUPPLY



ZURN®



"PRV"



Pressure Reducing Valves



Model 600XL

Water Pressure Reducing Valve with Integral By-pass Check Valve and Strainer

Application

Ideal for use where Lead-Free* valves are required. Designed for installation on potable water lines to reduce high inlet pressure to a lower outlet pressure. The integral strainer makes this device most suitable for residential and commercial water systems requiring frequent cleaning because of sediment and debris. The direct acting integral by-pass design prevents buildup of excessive system pressure caused by thermal expansion. The balanced piston design enables the regulator to react in a smooth and responsive manner to changes in system flow demand, while at the same time, providing protection from inlet pressure changes.

Standards Compliance

- ASSE® Listed 1003
 - IAPMO® Listed
 - CSA® Certified
 - City of Los Angeles Approved
 - NSF® Listed - Standard 61, Annex G*
 - Certified to NSF/ANSI 372* by IAPMO R&T
- *(0.25% MAX. WEIGHTED AVERAGE LEAD CONTENT)

Materials

Main valve body	Low Lead Cast Bronze	ASTM B 584
Access covers	Low Lead Cast Bronze	ASTM B 584
	Low Lead Brass	
Fasteners	Stainless Steel, 300 Series	
Stem & plunger	Low Lead Cast Bronze	ASTM B 584
	Low Lead Brass	
Elastomers	Buna Nitrile, (FDA Approved)	
	EPDM, (FDA Approved)	
Cap gaskets	Natural Vulcanized Fibre	
	Acetal (Delrin™), NSF Listed	
Strainer screen	Stainless Steel, 300 Series	
Seat	Stainless Steel, 300 Series	

Features

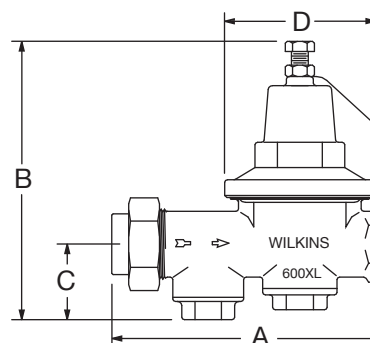
Sizes:	1/2", 3/4", 1", 1 1/4", 1 1/2", 2"
Maximum working water pressure	300 psi
Maximum working water temperature	140°F
Reduced pressure range (standard)	25 psi to 75 psi
Factory preset	50 psi
Hydrostatic test pressure	300 psi
CPVC tailpiece: Max. hot water temp.	140°F @ 100 psi
	Cold water rated temp. 73.4°F @ 400 psi



Certified to NSF/ANSI 61-G

Options (Suffixes can be combined)

- ☐ - standard with 20 mesh strainer screen, SU, FNPT
- ☐ C - copper sweat connection (3/4" thru 2")
- ☐ HR - 75 psi to 125 psi spring range, factory set at 85 psi
- ☐ HLR - 10 psi to 125 psi spring range, factory set at 50 psi
- ☐ HTSTSC - 180°F maximum temp, stainless steel trim, spring, sealed cage
- ☐ L - less integral by-pass check valve
- ☐ LU - less union assembly, female x female (3/4" & 1" only)
- ☐ LPV - 180°F maximum temp with 10 psi to 35 psi spring range, factory set at 20 psi
- ☐ LPC - 140°F maximum temp with 10 psi to 35 psi spring range, factory set at 20 psi (2" field set only)
- ☐ SC - sealed cage bell housing and stainless steel adjustment screw
- ☐ 610XL - 400 psi inlet rating and 75 psi to 125 psi spring range, factory set at 85 psi
- ☐ P - tapped and plugged for gauge
- ☐ CPVC - CPVC tailpiece connection (1/2"-1")
- ☐ G - Tapped with gauge
- ☐ CH - Chrome stem & plunger



Dimensions & Weights (do not include pkg.)

SIZE		CONNECTIONS	DIMENSIONS (approximate)								WEIGHT	
			A		B		C		D			
in.	mm		in.	mm	in.	mm	in.	mm	in.	mm	lbs.	kg.
1/2	15	SINGLE UNION	5 1/2	133	6 1/4	159	1 1/4	32	2 3/4	70	3	1.5
1/2	15	LESS UNION	4 1/2	114	6 1/4	159	1 1/4	32	2 3/4	70	3	1.5
3/4	20	SINGLE UNION	5 5/16	135	5 1/2	140	1 1/4	32	2 3/4	70	3	1.5
3/4	20	LESS UNION	4 7/8	121	5 1/2	140	1 1/4	32	2 3/4	70	3	1.5
1	25	SINGLE UNION	6 1/8	156	7 1/4	184	2	51	3 3/8	86	5	2.5
1	25	LESS UNION	5 3/4	146	7 1/4	184	2	51	3 3/8	86	5	2.5
1 1/4	32	SINGLE UNION	7 1/8	181	8	203	2	51	3 7/8	100	7	3.0
1 1/2	40	SINGLE UNION	9 1/8	232	10	254	2 1/2	64	5	127	13	6.0
2	50	SINGLE UNION	10 1/4	260	12	305	3	76	6 1/2	165	21	9.5

ZURN MODEL 600XL

with Integral By-pass Check Valve and Strainer

600XL



JABO #	SIZE	PSI
*	1/2"	25-75
760-80165	3/4"	25-75
*	1"	25-75
*	1-1/4"	25-75
*	1-1/2"	25-75
760-80300	2"	25-75

STD with 20 mesh screen , SU (Single Union), FNPT

*NON STOCK CALL JABO SUPPLY

600XLLUSC

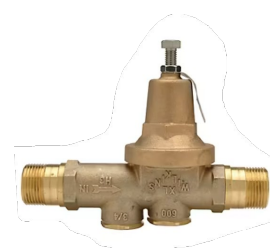


JABO #	SIZE	PSI
*	1/2"	25-75
760-80167	3/4"	25-75
760-80200	1"	25-75
*	1-1/4"	25-75
*	1-1/2"	25-75
*	2"	25-75

LU-less Union

SC -Sealed cage bell housing and stainless steel adjustment screw

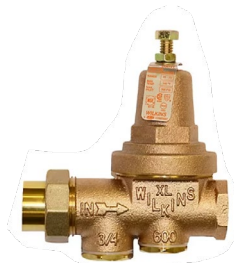
600XLDM



JABO #	SIZE	PSI
*	1/2"	25-75
760-80170	3/4"	25-75
*	1"	25-75
*	1-1/4"	25-75
*	1-1/2"	25-75
*	2"	25-75

DM-Double Male

600XLHR



JABO #	SIZE	PSI
*	1/2"	75-125
760-80152	3/4"	75-125
760-80163	1"	75-125
*	1-1/4"	75-125
*	1-1/2"	75-125
*	2"	75-125

HR- 75-125 psi spring range factory set 85 psi

*NON STOCK CALL JABO SUPPLY

600XLHRLUSC



JABO #	SIZE	PSI
*	1/2"	75-125
760-80153	3/4"	75-125
*	1"	75-125
*	1-1/4"	75-125
*	1-1/2"	75-125
*	2"	75-125

HR- 75-125 psi spring range factory set 85 psi

LU- Less Union Assembly, female x female (3/4" & 1" only)

SC-sealed cage bell housing and stainless steel adjustment screw

*NON STOCK CALL JABO SUPPLY

600XLDMHLR



JABO #	SIZE	PSI
*	1/2"	10-125
760-80171	3/4"	10-125
*	1"	10-125
*	1-1/4"	10-125
*	1-1/2"	10-125
*	2"	10-125

DM-Double Male

HLR-10-125 psi Spring Range , factory set at 50 psi



Model NR3XL

Water Pressure Reducing Valve with Integral
By-Pass Check Valve and Strainer

Application

Ideal for use where Lead-Free* valves are required. Designed for installation on potable water lines to reduce high inlet pressure to a lower outlet pressure. The integral strainer makes this device most suitable for residential and commercial water systems that require frequent cleaning of sediment and debris. The direct acting integral by-pass design prevents buildup of excessive system pressure caused by thermal expansion. The balance piston design enables the regulator to react in a smooth and responsive manner to changes in system flow demand, while at the same time, providing protection from inlet pressure changes. The sealed cage washer and stainless steel adjustment bolt and nut improve corrosion resistance for all applications including below-ground pit installation.

Standards Compliance

- ASSE® Listed 1003
- IAPMO® Listed
- CSA® Certified
- Meets the requirements of NSF/ANSI/CAN 61*

*(0.25% MAX. WEIGHTED AVERAGE LEAD CONTENT)

Materials

Main valve body	Low Lead Cast bronze ASTM B 584
Bell housing	UV resistant polymer composite
Internals	Stainless steel, 300 Series
Stem	Low Lead Brass
Elastomers	EPDM (FDA approved) Buna nitrile (FDA approved)
Cartridge	Delrin™
Springs	302 Stainless Steel
Strainer screen	300 Series Stainless Steel

Features

Sizes: 1/2", 3/4", 1", 1-1/4", 1-1/2", 2"	
Max. working water pressure (1/2" - 1-1/4")	400 psi
Max. working water pressure (1-1/2" - 2")	300 psi
Max. working water temperature	140°F
Reduced pressure range (1/2" - 1-1/4")	15 to 75 psi
Reduced pressure range (1-1/2" - 2")	25 to 75 psi
Factory preset	50 psi
Threaded connections (FNPT)	ANSI B1.20.1
Copper connections (FC)	ANSI B16.22
CPVC tailpiece: Max. hot water temp.	140°F @ 100 psi
Cold water rated temp.	73.4°F @ 400 psi

Dimensions & Weights (do not include pkg.)

SIZE		CONNECTIONS	DIMENSIONS (approximate)								WEIGHT	
			A		B		C		D			
in.	mm		in.	mm	in.	mm	in.	mm	in.	mm	lbs.	kg
1/2	15	SINGLE UNION	4 3/8	111	6 1/4	159	1 1/8	29	2 1/2	64	3	1.5
1/2	15	ROUGH IN	3 3/4	95	SAME AS LESS UNION							
1/2	15	LESS UNION	3 1/2	89	6 1/4	159	1 1/8	29	2 1/2	64	3	1.5
1/2	15	DOUBLE UNION	5 1/4	133	6 1/4	159	1 1/8	29	2 1/2	64	3	1.5
3/4	20	SINGLE UNION	4 7/16	113	6 1/4	159	1 1/8	29	2 1/2	64	3	1.5
3/4	20	ROUGH IN	3 3/4	95	SAME AS LESS UNION							
3/4	20	LESS UNION	3 1/2	89	6 1/4	159	1 1/8	29	2 1/2	64	3	1.5
3/4	20	DOUBLE UNION	5 3/8	137	6 1/4	159	1 1/8	29	2 1/2	64	3	1.5
3/4	20	DOUBLE MALE METER	3 5/8	92	6 1/4	159	1 1/8	29	2 1/2	64	3	1.5
1	25	SINGLE UNION	4 15/16	125	6 1/4	159	1 1/8	29	2 1/2	64	4	2
1	25	ROUGH IN	4 1/4	108	SAME AS LESS UNION							
1	25	LESS UNION	4	102	6 1/4	159	1 1/8	29	2 1/2	64	3.5	1.6
1	25	DOUBLE UNION	5 15/16	151	6 1/4	159	1 1/8	29	2 1/2	64	4.5	2.1
1	25	DOUBLE MALE METER	4	102	7 3/4	197	1 3/16	30	3	76	4	2.0
1 1/4	32	SINGLE UNION	6 3/16	157	7 3/4	197	1 3/16	30	3	76	5.5	2.5
1 1/4	32	ROUGH IN	5 1/4	133	SAME AS LESS UNION							
1 1/4	32	LESS UNION	5	127	7 3/4	197	1 3/16	30	3	76	5	2.3
1 1/4	32	DOUBLE UNION	7 3/8	187	7 3/4	197	1 3/16	30	3	76	6	2.7
1 1/2	40	SINGLE UNION	6 5/16	160	8 1/2	216	1 3/4	45	3 3/4	95	6.6	3
1 1/2	40	ROUGH IN	5 1/4	133	SAME AS LESS UNION							
1 1/2	40	LESS UNION	5	127	8 1/2	216	1 3/4	45	3 3/4	95	5.5	2.5
1 1/2	40	DOUBLE UNION	7 1/2	191	8 1/2	216	1 3/4	45	3 3/4	95	7.7	3.5
2	50	SINGLE UNION	6 1/4	159	8 1/2	216	2	51	3 3/4	95	8.1	3.7
2	50	ROUGH IN	5 1/4	133	SAME AS LESS UNION							
2	50	LESS UNION	5	127	8 1/2	216	2	51	3 3/4	95	6.7	3
2	50	DOUBLE UNION	7 1/2	191	8 1/2	216	2	51	3 3/4	95	9.5	4.3



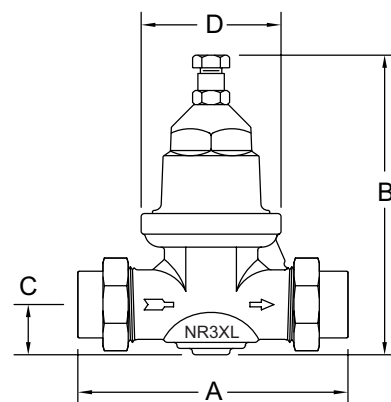
Options

(Suffixes can be combined)

- ☐ - standard with single union FNPT connection and 20 mesh strainer screen
- ☐ C - with FC (copper sweat) union connection
- ☐ DM - with double male meter thread connections (3/4" and 1" only)
connection with SS spring & sealed cage
- ☐ G - tapped and plugged with gauge
- ☐ DU - with double union connection (FNPT)
- ☐ DULU - with 2 integral FNPT connection (no union)
- ☐ PEX - with male barbed connection tailpiece for crossed-linked polyethylene tubing (1/2" - 1" only)
- ☐ PEXF1960 - with male barbed connection PEX tailpiece conforming to ASTM F1960 (1/2" - 1" only)
- ☐ P - tapped and plugged for gauge
- ☐ CPVC - CPVC tailpiece connection (3/4" - 1")
- ☐ HRSC - High Range 15-125 psi (1/2"-1-1/4" only) with sealed cage
- ☐ DUPF - with 2 Z-Bite™ push fit tailpiece connection 250 psi max pressure (1/2" - 1" only)
- ☐ DUPR - with 2 Z-Press™ press fit tailpiece connection 250 psi max pressure (3/4" - 2" only)

Accessories

- ☐ Repair kit
 - ☐ 3/4" NR3DUSPC
 - ☐ 1-1/4" BR4DUSPC
 - ☐ 1-1/2" NR3DUSPC
 - ☐ 2" NR3DUSPC
 - ☐ TPKXL
 - ☐ TPKXLPF
 - ☐ TPKXLPR
 - ☐ RFK-114NR3XL
- Special plastic spacer nipple
Steel pipe
Steel pipe
Steel pipe
Lead-Free Tailpiece kit
Z-Bite™ push fit Tailpiece kit
250 psi max pressure (1/2"-1" only)
Z-Press™ press fit Tailpiece kit
250 psi max pressure (3/4"-1" only)
Extends body length of 1-1/4" NR3XL to match 1-1/4" 70DU for easy retrofit.



ZURN MODEL NR3XL

with Integral By-pass Check Valve and Strainer

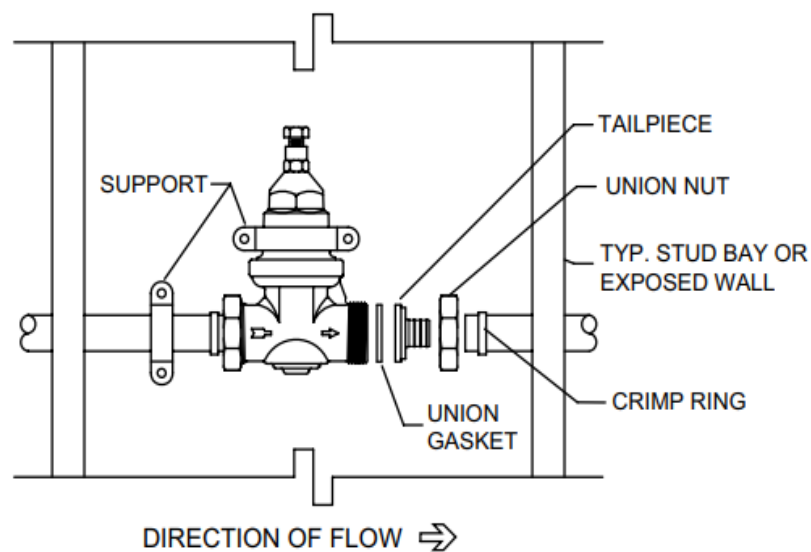
NR3XL STANDARD



Single Union x FNPT

20 Mesh Strainer Screen

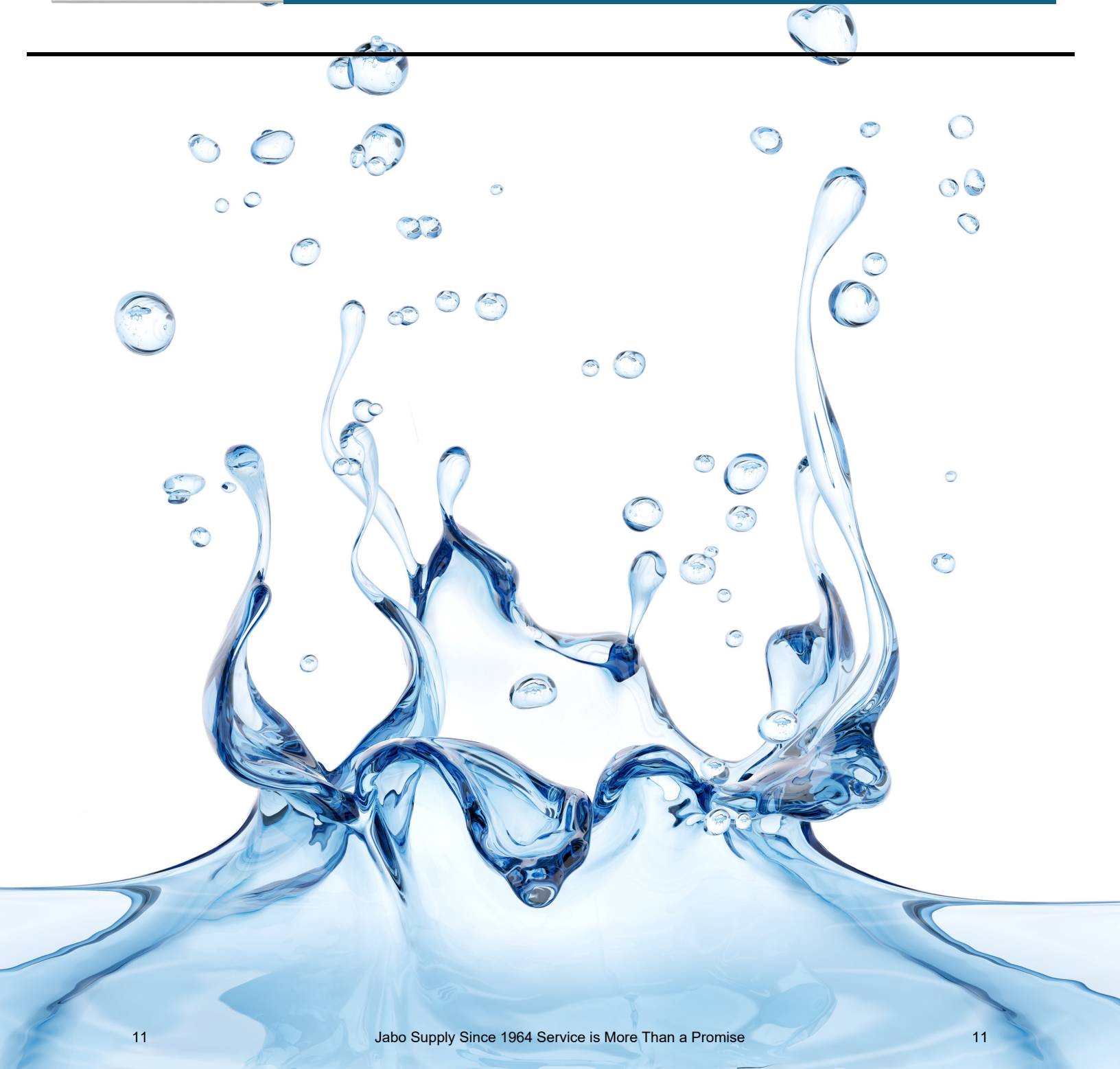
JABO #	SIZE	PSI
*	1/2"	75-125
760-80150	3/4"	75-125
*	1"	75-125
	1-1/4"	75-125
	1-1/2"	75-125
	2"	75-125





JABO SUPPLY

CALL JABO SUPPLY FOR ALL YOUR WATER WORKS NEEDS





JABO SUPPLY

JABO LOCATIONS

HUNTINGTON, WV

209 Braley Street, 25705
(304) 736-8333

PARKERSBURG, WV

10085 Emerson Avenue 26102
(304) 464-4400

NORTON, VA

205 Hawthorne Drive, 24273
(276) 679-1224

MORGANFIELD, KY

118 Jim Veatch Road, 42437
(270) 389-3430

BEAVER, WV (BECKLEY)

227 C&O Shop Road 25813
(304)-252-0000

SINCE 1964 SERVICE IS MORE THAN A PROMISE



JABO SUPPLY

"Apollo" Valves



"PRV"



Pressure Reducing Valves



36CLF Series

Water Pressure Reducing Valve

LEAD FREE



Job Name:	
Job Location:	
Engineer:	
Contractor:	
Tag:	
PO#:	
Rep:	
Wholesale Dist.:	

DESCRIPTION

The Apollo Lead Free* Pressure Reducing Valve Model PRC (36CLF Series) is designed to protect residential and commercial water distribution systems by automatically controlling excessive pressure changes. The valves integral thermoplastic cage provides maximum corrosion resistance. Designed for easy in-line servicing with bottom cleanout access to seat disc and strainer. The valve is built for long reliable service with proven ASTM grade Lead Free* materials.

FEATURES

- Built-In Thermal Expansion Bypass
- Balanced Piston Design
- Sealed Spring Cage For Vault Installations
- SS Adjusting Screw & Nut
- Bottom Access to Seat Disc & SS Strainer
- Factory Preset at 50 psi
- NPT, Solder, PEX, CPVC, Press Connections
- 100% Manufactured in USA

APPROVALS

- City of Los Angeles Approved
- NSF/ANSI 372 - Lead Free
- ASSE 1003
- CSA B356

PERFORMANCE RATING

- Maximum Supply Pressure: 400 psig
- Std. Temperature Range: 33°F – 180°F
- Maximum Set Pressure:
Standard: 75 psi
High Pressure: 125 psig

OPTIONS

- (-P) - Tapped w/plug
- (-G) - Tapped w/gauge
- (-02) - 10-35 psig
- (-03) - 75-125 psig
- (36C) - with Standard Material

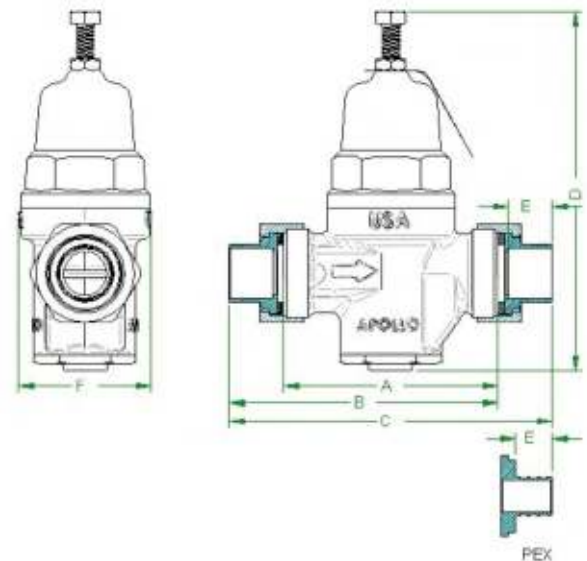
STANDARD MATERIALS LIST

BODY	Lead Free* Bronze, UNS 89836
UNION NUT	BRASS, ASTM B16
TAILPIECE	Lead Free* Brass, UNS C27451
SCREEN	Stainless Steel
CAP	Noryl
DIAPHRAGM	NSF Grade EPDM
SEAT DISC	NSF Grade EPDM
ADJUSTING SCREW/NUT	Stainless Steel
SPRING	Stainless Steel, ASTM A228
O-RINGS	NSF Grade EPDM

DIMENSIONS

SIZE (IN.)	CONNECT TYPE	DIMENSIONS (IN.)						WT. (UNION) LB. EACH
		A	B	C	D	E	F	
1/2"	THREAD	3.625	4.50	5.375	6.00	0.625	2.75	3.5
	SOLDER	3.625	4.50	5.50	6.00	0.50	2.75	3.4
	PEX	3.625	4.50	5.50	6.00	0.625	2.75	3.3
	CPVC	3.625	4.25	5.00	6.00	0.50	2.75	3.1
	PRESS	3.625	-	5.875	6.00	-	2.75	2.99
3/4"	THREAD	3.625	4.50	5.50	6.00	0.625	2.75	3.4
	SOLDER	3.625	4.50	5.50	6.00	0.75	2.75	3.3
	PEX	3.625	4.625	5.625	6.00	0.625	2.75	3.2
	CPVC	3.625	4.50	5.50	6.00	0.625	2.75	3
	PRESS	3.625	-	5.75	6.00	-	2.75	3.04
1"	THREAD	3.75	4.625	5.75	6.00	0.625	3.375	4.5
	SOLDER	3.75	4.625	5.75	6.00	0.875	3.375	4.4
	PEX	3.75	4.75	6.00	6.00	0.75	3.375	4.3
	CPVC	3.75	4.75	6.00	6.00	0.9375	3.375	4
	PRESS	3.625	-	5.875	6	-	3.375	3.46

Nominal dimensions are shown. Allowances must be made for manufacturers' tolerances.



*LEAD FREE: The wetted surfaces of this product shall contain no more than 0.25% lead by weighted average. Complies with Federal Public Law 111-380. ANSI 3rd party approved and listed.



36CLF Series

Water Pressure Reducing Valve

LEAD FREE

PART NUMBER MATRIX

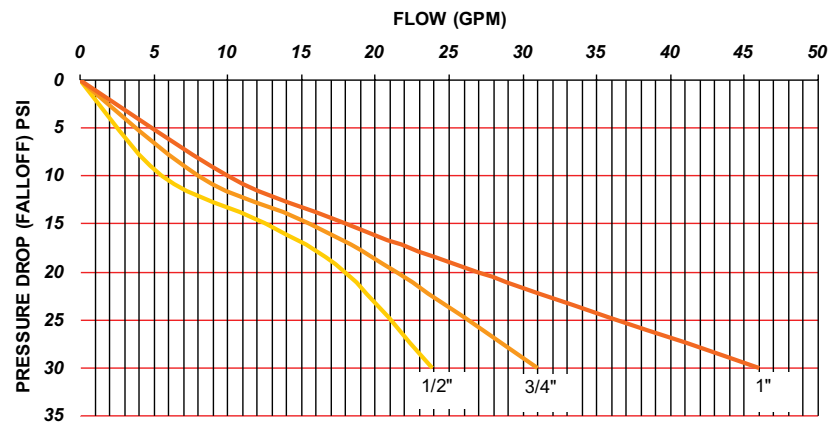
36CLF 36C	X	XX	X	X	X
SERIES	CONNECTION	SIZE	GAUGE	PRESSURE RANGE	OPTION
36CLF (LEAD FREE)	1 - SINGLE UNION NPT	03 - 1/2"	0 - WITHOUT GAUGE	1 - 25 - 75 PSIG RANGE	C - CPVC TAILPIECE
36C	2 - NO UNION NPT	04 - 3/4"	P - W/ GAUGE PORT PLUGGED	2 - 10 - 35 PSIG RANGE	P - PUSH*
	3 - SINGLE UNION SOLDER X NPT	05 - 1"	G - W/ GAUGE	3 - 75 - 125 PSIG RANGE	PR - PRESS**
	4 - DOUBLE UNION NPT				
	5 - DOUBLE UNION SOLDER				
	9 - DOUBLE UNION PEX B/C F1807				

* Available in Direct Connection

** Available in Direct Connection, and Double Union

WATER CAPACITY (GPM)

FALL-OFF (PSI)	PRESSURE DIFFERENTIAL (PSI)		
	25	50	75
5	1.3	1.5	1.7
10	4.7	5.5	6.3
15	10.6	12.5	14.4
20	15.3	18	20.7
5	2.1	2.5	2.9
10	6.8	8	9.2
15	13.2	15.5	17.8
20	18.3	21.5	24.7
5	2.8	3.3	3.7
10	8.5	10	11.5
15	15.3	18	20.7
20	21.3	25	28.8





J

Pressure Reducing Valve LEAD FREE



Job Name:	
Job Location:	
Engineer:	
Contractor:	
Tag:	
PO#:	
Rep:	
Wholesale Dist.:	

DESCRIPTION

Apollo 36LF Series Pressure Reducing Valves are designed to protect residential and commercial water distribution systems by controlling excessive pressures. The valves are built for long reliable service with proven ASTM grade materials including a lead free* bronze body and stainless steel strainer.

FEATURES

- Lead Free* AB 1953 Certified
- Corrosion Resistant Bronze Body and Bonnet
- 100% Factory Tested, Preset to 50 psi (-01)
- Control Pressure Ranges:
10-35 psi, 25-75 psi (Standard), 75-125 psi
- Integral SS Strainer
- Balanced Piston Design
- Internal Thermal Expansion Bypass
- Multiple Connection Options
- Optional Pressure Gauge or Tapping
- **100% Manufactured in USA**

APPROVALS

- NSF/ANSI 372 Lead Free
- ASSE 1003
- CSA B356

OPTIONS

- (P) - Tapped w/ Plug
- (G) - Tapped w/ Gauge
- (02) - 10-35 psig
- (03) - 75-125 psig
- (36) - with Standard Material for Non-Potable Applications

STANDARD MATERIALS LIST

BODY	C89836 Lead Free* Bronze
COVER	Bronze, ASTM B584
DIAPHRAGM	FDA Grade Buna W/ Polyester
SEAT DISC	FDA Grade EPDM
STEM	C27450 Lead Free* Brass
SPRING	Stainless Steel
O-RINGS	NSF Grade EPDM

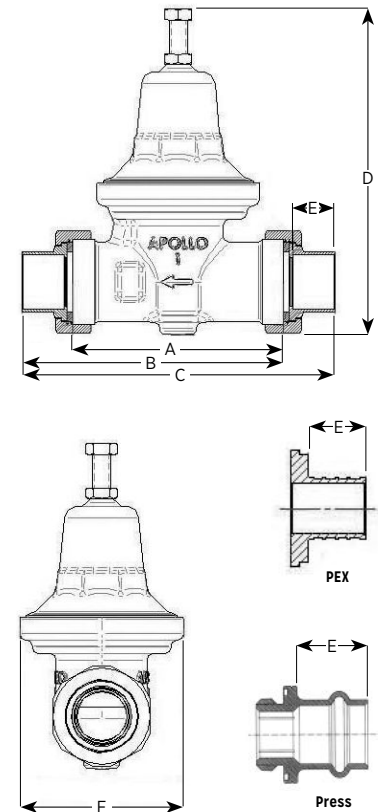
PERFORMANCE RATING

- Maximum Supply Pressure up to 300 psig
- Temperature Range 33 °F – 180 °F

DIMENSIONS

SIZE (IN.)	CONNECT TYPE	DIMENSIONS (IN.)						WT. (UNION) LB. EACH
		A	B	C	D	E	F	
1/2"	THREAD	4	4-7/8	5-5/8	5-7/8	5/8	2-3/4	3.5
	SOLDER	4	4-7/8	5-5/8	5-7/8	1/2	2-3/4	3.4
	PEX	4	5	5-3/4	5-7/8	5/8	2-3/4	3.3
	CPVC	4	4-5/8	5-1/4	5-7/8	1/2	2-3/4	3.1
3/4"	THREAD	3-7/8	4-7/8	5-5/8	5-7/8	5/8	2-3/4	3.4
	SOLDER	3-7/8	4-7/8	5-5/8	5-7/8	3/4	2-3/4	3.3
	PEX	3-7/8	5	5-3/4	5-7/8	5/8	2-3/4	3.2
	CPVC	3-7/8	4-7/8	5-5/8	5-7/8	5/8	2-3/4	3
1"	THREAD	4-3/8	5-1/2	6-3/8	6-7/8	5/8	3-3/8	4.5
	SOLDER	4-3/8	5-1/2	6-3/8	6-7/8	5/8	3-3/8	4.4
	PEX	4-3/8	5-1/2	6-5/8	6-7/8	7/8	3-3/8	4.3
	CPVC	4-3/8	5-3/4	7	6-7/8	3/4	3-3/8	4
1-1/4"	THREAD	5-3/8	6-1/2	7-1/2	8-7/8	7/8	4	10.2
	SOLDER	5-3/8	6-5/8	7-3/4	8-7/8	1	4	10.1
1-1/2"	THREAD	5-3/8	6-5/8	7-7/8	8-7/8	3/4	4	10.4
	SOLDER	5-3/8	6-3/4	8	8-7/8	1-1/8	4	10.3
2"	THREAD	7-1/8	8-1/2	9-7/8	11-1/2	1	5-3/4	22.5
	SOLDER	7-1/8	8-7/8	10-1/2	11-1/2	1-3/8	5-3/4	22.4

Nominal dimensions are shown. Allowances must be made for manufacturers' tolerances.



*LEAD FREE: The wetted surfaces of this product shall contain no more than 0.25% lead by weighted average. Complies with Federal Public Law 111-380. ANSI 3rd party approved and listed.



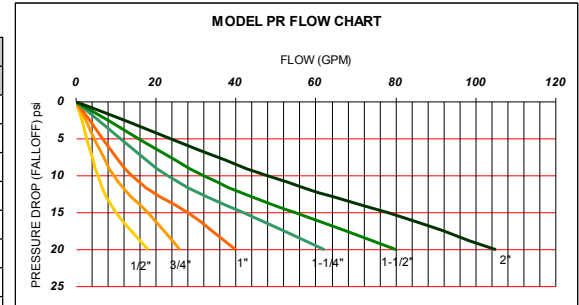
36LF Series

Pressure Reducing Valve

LEAD FREE

FLOW CAPACITY

PIPE SIZE	FALL-OFF* (PSI)	PRESSURE DIFFERENTIAL (PSI)			PIPE SIZE	FALL-OFF* (PSI)	PRESSURE DIFFERENTIAL (PSI)		
		25	50	75			25	50	75
1/2"	5	1.7	2	2.3	1-1/4"	5	8.5	10	11.5
	10	4.3	5	5.8		10	19.6	23	26.5
	15	8.5	10	11.5		15	35.7	42	48.3
	20	15.3	18	20.7		20	53	62	71
3/4"	5	3.4	4	4.6	1-1/2"	5	12	14	16
	10	7.7	9	10.4		10	27	32	37
	15	14.5	17	19.6		15	48	56	64
	20	14.5	17	19.6		20	68	80	92
1"	5	5.1	6	6.9	2"	5	15	18	21
	10	11.9	14	16.1		10	39	46	53
	15	22.1	26	29.9		15	66	78	90
	20	34	40	46		20	94	110	127



Note: Flow curves are based on static conditions of 100psi inlet pressure and 50 psi outlet pressure.
 Pressure differential is the difference between the supply pressure and adjusted outlet pressure measured in the static (closed) condition.
 Pressure fall-off is the decrease in downstream regulated pressure as the flow increases.

PART NUMBER MATRIX

36LF 36	X	X	X	X	X	X
SERIES	CONNECTION	OPTION	SIZE	GAUGE	PRESSURE RANGE	OPTION
36LF (LEAD FREE)	1 - SINGLE UNION NPT	0 - NO OPTION	3 - 1/2"	0 - NO GAUGE	1 - 25-75 PSIG	PR - PRESS
36	2 - NO UNION NPT	C - CPVC TAILPIECE	4 - 3/4"	P - W/ GAUGE PORT	2 - 10-35 PSIG	(APPLIES TO MODELS 36-20X
	3 - SINGLE UNION SOLDER X NPT	S - SEALED CAGE*	5 - 1"	G - W/ GAUGE	3 - 75-125 PSIG	AND 36LF20X ONLY)
	4 - DOUBLE UNION NPT	X - PEX F1807 TAILPIECE	6 - 1-1/4"			
	5 - DOUBLE UNION SOLDER		7 - 1-1/2"			
	6 - SINGLE UNION METER X NPT		8 - 2"			
	8 - DOUBLE UNION CPVC					
	9 - DOUBLE UNION PEX F1807					

* S option = Sealed cage with stainless steel adjusting screw for vault installation.

*LEAD FREE: The wetted surfaces of this product shall contain no more than 0.25% lead by weighted average. Complies with Federal Public Law 111-380. ANSI 3rd party approved and listed.

J

APOLLO

36CLF



JABO #	SIZE	PSI
760-80070	1/2"	25-75
760-80080	3/4"	25-75
760-80090	1"	25-75

MAXIMUM SUPPLY PRESSURE 400PS

SEE SPEC SHEETS FOR OTHER OPTIONS

SEE SPEC SHEETS FOR OTHER OPTIONS

36LF



JABO #	SIZE	PSI
*	1/2"	25-75
*	3/4"	25-75
*	1"	25-75
760-80100	1-1/4"	25-75
760-80110	1-1/2"	25-75
760-80120	2"	25-75

MAXIMUM SUPPLY PRESSURE 300PS

SEE SPEC SHEET FOR OTHER OPTIONS





JABO SUPPLY

CALL JABO SUPPLY FOR ALL YOUR WATER WORKS NEEDS



JABO SUPPLY

JABO LOCATIONS

HUNTINGTON, WV

*209 Braley Street, 25705
(304) 736-8333*

PARKERSBURG, WV

*10085 Emerson Avenue 26102
(304) 464-4400*

NORTON, VA

*205 Hawthorne Drive, 24273
(276) 679-1224*

MORGANFIELD, KY

*118 Jim Veatch Road, 42437
(270) 389-3430*

BEAVER, WV (BECKLEY)

*227 C&O Shop Road 25813
(304)-252-0000*

SINCE 1964 SERVICE IS MORE THAN A PROMISE