



JABO SUPPLY CORPORATION

MILL & FIRE HOSE

MILL HOSE



FIRE HOSE

MSHA & NON MSHA APPROVED



MILL WASHDOWN & FIRE HOSE



JABO SUPPLY



5 LOCATIONS

PARKERSBURG, WV

10085 Emerson Avenue 26102
(304) 464-4400

MORGANFIELD, KY

118 Jim Veatch Road, 42437
(270) 389-3430

HUNTINGTON, WV

209 Braley Street, 25705
(304) 736-8333

NORTON, VA

205 Hawthorne Drive, 24273
(276) 679-1224

BEAVER, WV (BECKLEY)

227 C&O Shop Road 25813
(304-252-0000

SINCE 1964 SERVICE IS MORE THAN A PROMISE

MILL (WASHDOWN) HOSE

NOT INTENDED FOR FIRE FIGHTING

MILL DISCHARGE ASSEMBLIES

DOUBLE JACKET CONTRACTOR GRADE



NOT INTENDED FOR FIREFIGHTING

JABO PART#	SIZE	THREAD TYPE
*	1-1/2"	NST
*	1-1/2"	NPSH
*	2-1/2"	NST
*	2-1/2"	NPSH
*Non Stock - Call Jabo Supply		



DJ Series

Double Jacket "Contractor Grade"

Coupled with Male and Female Aluminum Rocker Lug Couplings

General Applications:

- Heavy duty equipment or pump rental
- Hydrant-to-truck water supply line
- Municipal washdown
- Ship deck washdown

Construction:

Double jacket with 100% polyester yarn. Water and mildew-resistant cover, will not rot, even if the hose is stored wet.

Service Temperature Range:

-25°F (-31°C) to +185°F (+85°C)



KURIYAMA
OF AMERICA, INC.

Since 1968

Nominal Specifications

Part Number	Size		Length (ft)	Thread Type	Max. Working Pressure (psi) at 68°F	Weight Each (lbs)
	(in)	(mm)				
DJ150NSTX50	1 1/2	38.1	50	NST	200	14
DJ150NPSHX50	1 1/2	38.1	50	NPSH	200	14
DJ250NSTX50	2 1/2	63.5	50	NST	200	23
DJ250NPSHX50	2 1/2	63.5	50	NPSH	200	23

MILL (WASHDOWN) HOSE

NOT INTENDED FOR FIRE FIGHTING

Synthetic Double Jacket Mill Hose



Application

- Ideal for open end discharge applications; not intended for fire fighting service



Features

- Consult Dixon® for pricing and availability of additional lengths and other configurations
- Double jacket hoses are not recommended for use with field reattachable couplings



Materials

- Outer construction: double jacket, all polyester
- Tube construction: black, PVC rubber

Specifications

- Rated pressure: 250 PSI at 70°F (21°C)
- Working pressure: 200 PSI at 70°F (21°C)

Uncoupled



Size	Bowl	Length	Part #
1-1/2"	1-13/16"	50'	DM15-50UC
		100'	DM15-100UC
2"	2-5/16"	50'	DM20-50UC
		100'	DM20-100UC
2-1/2"	2-7/8"	50'	DM25-50UC
		100'	DM25-100UC

Coupled with female and male NST (NH) thread, rocker lug, aluminum expansion ring couplings



Size	Bowl	Length	Part #
1-1/2"	1-13/16"	50'	DM15-50RAF
		100'	DM15100RAF
2-1/2"	2-7/8"	50'	DM25-50RAF
		100'	DM25100RAF

Coupled with female and male NPSH thread, rocker lug, aluminum expansion ring couplings



Size	Bowl	Length	Part #
1-1/2"	1-13/16"	50'	DM15-50RAS
		100'	DM15100RAS
2"	2-5/16"	50'	DM20-50RAS
		100'	DM20100RAS
2-1/2"	2-7/8"	50'	DM25-50RAS
		100'	DM25100RAS

Coupled with female and male NPT thread, rocker lug, aluminum expansion ring couplings



Size	Bowl	Length	Part #
1-1/2"	1-13/16"	50'	DM15-50RAT
		100'	DM15100RAT
2"	2-5/16"	50'	DM20-50RAT
		100'	DM20100RAT
2-1/2"	2-7/8"	50'	DM25-50RAT

Coupled with female and male (C & E) global aluminum cam and groove, crimp sleeve



Size	Bowl	Length	Part #
1-1/2"	1-13/16"	50'	DM15-50GAX
		100'	DM15100GAX
2"	2-5/16"	50'	DM20-50GAX
		100'	DM20100GAX

MILL & FIRE HOSE

SYNTHETIC SINGLE JACKET MILL HOSE

NOT INTENDED FOR FIRE FIGHTING

Application

- Used in open end water discharge applications only; not intended for firefighting service

Feature

- Consult Dixon® for pricing and availability on 75' lengths and other threads and configurations

Materials

- Outer construction: single jacket, all polyester
- Tube construction: black, PVC rubber

Specifications

- Rated pressure: **250 PSI** at ambient temperature **70°F (21°C)**
- Working pressure: **112 PSI** at ambient temperature **70°F (21°C)**



MILL & FIRE HOSE

Uncoupled

Size	Bowl	Length	Part #
1"	1-1/4"	50'	M10-50UC
		100'	M10-100UC
		300'	M10-300UC
1-1/2"	1-11/16"	25'	M15-25UC
		50'	M15-50UC
		100'	M15-100UC
2"	2-3/8"	25'	M20-25UC
		50'	M20-50UC
		100'	M20-100UC
2-1/2"	2-11/16"	25'	M25-25UC
		50'	M25-50UC
		100'	M25-100UC
3"	3-3/8"	25'	M30-25UC
		50'	M30-50UC
		100'	M30-100UC
4"	4-3/8"	25'	M40-25UC
		50'	M40-50UC
		100'	M40-100UC
6"	6-3/8"	25'	M60-25UC
		50'	M60-50UC

SYNTHETIC SINGLE JACKET MILL HOSE

NOT INTENDED FOR FIRE FIGHTING

Application

- Used in open end water discharge applications only; not intended for fire fighting service



MILL & FIRE HOSE

Feature

- Consult Dixon® for pricing and availability on 75' lengths and other threads and configurations

Materials

- Outer construction: single jacket, all polyester
- Tube construction: black, PVC rubber

Specifications

- Rated pressure: **250 PSI** at ambient temperature **70°F (21°C)**
- Working pressure: **125 PSI** at ambient temperature **70°F (21°C)**

Coupled with NPSH female and male expansion ring couplings



Size	Length	Part #
1-1/2"	50'	M15-50RAS
	100'	M15100RAS
2"	50'	M20-50RAS
	100'	M20100RAS
2-1/2"	50'	M25-50RAS
	100'	M25100RAS

Coupled with NST (NH) female and male expansion ring couplings



Size	Length	Part #
1-1/2"	50'	M15-50RAF
	100'	M15100RAF
2-1/2"	25'	M25-25RAF
	50'	M25-50RAF
	100'	M25100RAF

Coupled with MNPT x MNPT male expansion ring couplings



Size	Length	Part #
1-1/2"	50'	M15-50RAT
	100'	M15100RAT
2"	50'	M20-50RAT
	100'	M20100RAT

SYNTHETIC SINGLE JACKET MILL HOSE

NOT INTENDED FOR FIRE FIGHTING



MILL & FIRE HOSE

Application

- Used in open end water discharge applications only; not intended for fire fighting service



Feature

- Consult Dixon® for pricing and availability of additional lengths and other configurations

Materials

- Outer construction: single jacket, all polyester
- Tube construction: black, PVC rubber

Coupled with NPSH female and male King™ short shank couplings, crimp sleeve, aluminum shank with brass pin lug swivel nut

Size	Length	Working Pressure PSI at 70°F (21°C)	Part #
1-1/2"	25'	75	M15-25KAS
	50'		M15-50KAS
2"	25'	75	M20-25KAS
	50'		M20-50KAS
2-1/2"	25'	50	M25-25KAS
	50'		M25-50KAS
3"	25'	50	M30-25KAS
	50'		M30-50KAS



Coupled with NST (NH) female and male King™ short shank couplings, crimp sleeve, aluminum shank with brass pin lug swivel nut

Size	Length	Working Pressure PSI at 70°F (21°C)	Part #
1-1/2"	25'	75	M15-25KAF
	50'		M15-50KAF
2-1/2"	25'	50	M25-25KAF
	50'		M25-50KAF



Coupled with female and male (C & E) global aluminum cam and groove, crimp sleeve

Size	Length	Working Pressure PSI at 70°F (21°C)	Part #
1-1/2"	25'	112	M15-25GAX
	50'		M15-50GAX
2"	25'	112	M20-25GAX
	50'		M20-50GAX
2-1/2"	25'	112	M25-25GAX
	50'		M25-50GAX
3"	25'	112	M30-25GAX
	50'		M30-50GAX
4"	25'	112	M40-25GAX
	50'		M40-50GAX



FIRE FIGHTING HOSE

NON MSHA APPROVED



MILL & FIRE HOSE

ROCKER LUG BRASS NST (NH THREADS)

		
FIRE FIGHTING		
JABO PART#	SIZE	LENGTH
*	1"	50'
*	1"	100'
*	1-1/2"	25'
034-12864	1-1/2"	50
*	1-1/2"	75
*	1-1/2"	100'
*	2-1/2"	25'
034-12866	2-1/2"	50
*	2-1/2"	75'
*	2-1/2"	100'
<i>*Non Stock - Call Jabo Supply</i>		

ROCKER LUG ALUMINUM (NPSH THREADS)

		
FIRE FIGHTING		
JABO PART#	SIZE	LENGTH
*	1"	50'
*	1"	100'
*	1-1/2"	25'
034-12864	1-1/2"	50
*	1-1/2"	75
*	1-1/2"	100'
*	2-1/2"	25'
*	2-1/2"	50
*	2-1/2"	75'
*	2-1/2"	100'
<i>*Non Stock - Call Jabo Supply</i>		

Coupled with female and male expansion ring couplings

Size	Length	Rocker Lug Aluminum NST (NH) Part #	Rocker Lug Brass NST (NH) Part #	Rocker Lug Aluminum NPSH Part #
1"	50'	A510-50RAF	---	A510-50RAS
	100'	A510100RAF	---	A510100RAS
1-1/2"	25'	A515-25RAF	---	A515-25RAS
	50'	A515-50RAF	A515-50RBF	A515-50RAS
	75'	A515-75RAF	---	A515-75RAS
	100'	A515100RAF	A515100RBF	A515100RAS
2-1/2"	25'	A525-25RAF	---	A525-25RAS
	50'	A525-50RAF	A525-50RBF	A525-50RAS
	75'	A525-75RAF	---	---
	100'	A525100RAF	A525100RBF	A525100RAS



The Right Connection®

Specification Sheet

Single Jacket 500 Pound Test

- Rubber Lined
- 1", 1½", 1¾", 2", 2½", 3"

• Scope

Quality: The fire hose assembly supplied under this specification shall be constructed with superior quality materials. NFPA 1961 standards shall be observed in production of the assembly, in order to ensure its quality and durability.

Service Life: Hose furnished under these specifications will have a potential service life **warranty** of not less than **five years**; barring mistreatment that would render it unfit for service. Upon delivery, the hose shall be free from defects in workmanship and materials. Any defective hose will be replaced at no charge.

• Jacket Construction

The jackets will be woven evenly and be free of defects, including knots, lumps, or unsightly disfigurements that could jeopardize the integrity of the hose assembly. The warp yarn shall consist of staple polyester yarn. The use of filament or entangled yarn is expressly forbidden due to the lack of inherent abrasion resistance. The filler yarns shall be constructed of high strength, low elongation, filament polyester to reduce weight and increase flexibility.

• Abrasion Impregnation

Hose assemblies are available with polymer impregnation that provide additional abrasion resistance. Colors include: yellow, orange, red, tan, black, blue and green. Color shall be pure and even in each hose. Impregnated hose shall meet the requirements of Mil-H-24606B for abrasion resistance.

• Lining

The rubber lining shall be a single-ply extruded tube of synthetic EPDM compounded to resist ozone. The finished form shall be free of pits or other imperfections and have a smooth finish. No reclaimed rubber shall be used. Plastic tubes that sacrifice durability of the hose life for the sake of weight are not acceptable.

Backing: The backing shall be of adequate thickness to create a smooth waterway but not greater than .020. The fire hose constructed under this specification shall be manufactured fully backed.

Tensile Strength & Ultimate Elongation: Shall meet the standards of Underwriters Laboratories, Inc.™ as well as all other properties of UL-19 for rubber lined hoses. A valid U.S. Underwriters inspection procedure shall be in force at the time of bid.

• Hydrostatic Testing

Stock Lengths: Standard lengths are 50, 75 and 100 feet.

Size	1"	1½"	2"	2½"	3"
Part Number	A510	A515	A520	A525	A530
Test Pressure	500psi	500psi	500psi	500psi	400psi
Elongation	4%	5%	6%	7%	8%
Twist per foot	71° right	64° right	64° right	25° right	25° right
Warp	10"	10"	10"	10"	10"
Rise	4"	3"	1"	0	0
Burst Test	800psi	800psi	750psi	750psi	750psi
Kink Test	500psi	400psi	350psi	350psi	300psi

• Finished Hose

Markings: Beginning at a point not less than four feet from the end, each fifty foot section shall be stencilled in indelible ink with letters at least one inch high stating the name of the manufacturer, month and year of manufacture, and service test to 250 PSI per NFPA 1962. The ink used will be of a contrasting color.

Methods of Testing: All measurements and tests necessary to determine compliance of the fire hose specified requirements shall be made with ASTM, UL and NFPA 1961 designation, unless otherwise prescribed.

• Weights and Measures

Size	1"	1½" *	2" *	2½" *	3" *
Part Number	A510	A515	A520	A525	A530
Bowl Size	1¼"	1 ¾"	2 3/8"	2 13/16"	3 3/8"
Weight per 50' length Uncoupled	9 lbs.	13 lbs.	21 lbs.	24 lbs.	32 lbs.
Weight per 50' length Coupled	11 lbs.	14 lbs.	22 lbs.	25 lbs.	35 lbs.

* Available with a UL label add-on

• Couplings

As required by purchaser, expansion ring threaded, STORZ clamp ring, etc. Dixon Fire reserves the right to modify any specification without prior notice to meet or exceed changing standards. Customers are advised that special diameters or construction characteristics can be produced on special request. For more information, please contact your Dixon Fire authorized distributor.

Dixon Fire

FIRE FIGHTING HOSE

MSHA APPROVED



MILL & FIRE HOSE



Diameter	Part No.	Service Test	Proof Test	Burst Test	Bowl Size	Weight Uncoupled
1½"	SP15-MSHA	300 psi	600 psi	900 psi	1¾"	0.23 lbs/ft
2"	SP20-MSHA	300 psi	600 psi	900 psi	2¼"	0.33 lbs/ft
2½"	SP25-MSHA	300 psi	600 psi	900 psi	2¾"	0.39 lbs/ft
1½"	DP15-MSHA	400 psi	800 psi	1200 psi	1 ¹⁵ / ₁₆ "	0.38 lbs/ft
2"	DP20-MSHA	400 psi	800 psi	1200 psi	2 ² / ₅ "	0.46 lbs/ft
2½"	DP25-MSHA	400 psi	800 psi	1200 psi	3"	0.64 lbs/ft

FIRE FIGHTING EQUIPMENT

COMMONLY USED FOR UNDERGROUND MINING

MILL & FIRE HOSE

MSHA APPROVED SINGLE JACKET
POLYESTER FIRE HOSE WITH NPSH ENDS



MSHA APPROVED SINGLE JACKET POLYESTER
FIRE HOSE WITH NPSH ENDS



MINE GUARDIAN FOG NOZZLE NPSH/IPT



BRASS INDUSTRIAL FOG NOZZLE



NPT RIGID FEMALE TO NPSH RIGID MALE
WITH CAP DRILLED



NPT RIGID FEMALE TO NPSH RIGID MALE
WITH CAP DRILLED



FIRE FIGHTING FITTINGS

COMMONLY USED FOR UNDERGROUND MINING

NPSH SWIVEL FEMALE TO NPT FEMALE
(FXF)*Anodized Alum*

RH	A153RL1.5FIX1.5FTAP
----	---------------------

NPSH SWIVEL FEMALE TO NPT MALE (FXM)

*Anodized Alum*

RH	A154RL1.5FIX1.5MTAP
----	---------------------

NPSH SWIVEL FEMALE TO NPT FEMALE
(FXF)*BRASS*

JABO	027-16603
------	-----------

NPSH SWIVEL FEMALE TO NPT MALE (FXM)

*BRASS*

JABO	027-16604
------	-----------

WATER CURTIN

*NPSH ADAPTER ADDED BUT NOT SHOWN IN PHOTO*

RH	1269-2238 - A1371.5FIX1.5MN
----	-----------------------------

UNIVERSAL SPANNER WRENCH



1-6"

RH	W-101
----	-------

MILL & FIRE HOSE

ADDITIONAL ITEMS AVAIL UPON REQUEST-CALL YOUR JABO CUSTOMER SERVICE REPRESENTATIVE FOR MORE INFORMATION

FIRE FIGHTING FITTINGS



MILL & FIRE HOSE

Female to Male Hex Nipple Brass



reducer



same size



increaser

JABO #	FEMALE	MALE	DIXON #
027-16541	2-1/2" FPT	2" MPT	FM2520T
027-16551	2" NPT	2-1/2" NST	FM2025F
027-16550	2" NPSH	2" NPT	FM20S20T
027-16552	2-1/2" NST	2" NPT	FM25F20T
027-16600	1-1/2" NST	1-1/2" NPT	FM15F15T

Female to Male Hex Nipples

Feature

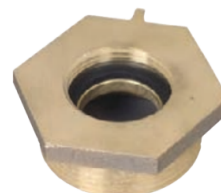
- Other configurations are also available, consult Dixon for information



reducer



same size



increaser

Female Thread	Male Thread	Cast Brass Part #
3/4 GHT	1" NPT	FM7610T
1" NPSH	3/4" GHT	FM10S76
	3/4" GHT	FM1076
	1" NPSH	FM1010
1" NPT	1" NST (NH)	FM1010F
	1-1/2" NPSH	FM1015
	1-1/2" NST (NH)	FM1015F
1" NST (NH)	1" NPT	FM10F10T
	1-1/2" NPSH	FM1515
1-1/2" NPT	1-1/2" NST (NH)	FM1515F
	2-1/2" NST (NH)	FM1525F
	1-1/2" NPSH	FM15F15S
	1-1/2" NPT	FM15F15T
	2" NPT	FM15F20T
	2-1/2" NPT	FM15F25T
	2-1/2" NST (NH)	FM15F25F
	1-1/2" NST (NH)	FM15F15F
	1-1/2" NST (NH)	FM15S15F
1-1/2" NPSH	1-1/2" NPT	FM15S15T
	2" NPT	FM15S20T
	1-1/2" NPSH	FM20S15
2" NPSH	1-1/2" NST (NH)	FM20S15F
	1-1/2" NPT	FM20S15T
	2" NPT	FM20S20T
	2-1/2" NST (NH)	FM20S25F
	1-1/2" NPSH	FM2015
2" NPT	1-1/2" NST (NH)	FM2015F
	2" NPSH	FM2020
	2-1/2" NST (NH)	FM2025F
	3/4" NPT	FM25F75T
	1" NPT	FM25F10T
2-1/2" NST (NH)	1-1/2" NST (NH)	FM25F15F
	1-1/2" NPT	FM25F15T
	2" NPT	FM25F20T
	1-1/2" NST (NH)	FM2515F
2-1/2" NPT	2-1/2" NPSH	FM2525
	2-1/2" NST (NH)	FM2525F

Table continued on next page

FIRE FIGHTING FITTINGS



Female to Male Hex Nipples

Feature

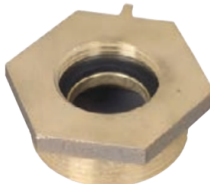
- Other configurations are also available, consult Dixon for information



reducer



same size



increaser

Female Thread	Male Thread	Cast Brass Part #
3/4 GHT	1" NPT	FM7610T
1" NPSH	3/4" GHT	FM10S76
1" NPT	3/4" GHT	FM1076
	1" NPSH	FM1010
	1" NST (NH)	FM1010F
	1-1/2" NPSH	FM1015
1" NST (NH)	1-1/2" NST (NH)	FM1015F
1-1/2" NPT	1" NPT	FM10F10T
	1-1/2" NPSH	FM1515
	1-1/2" NST (NH)	FM1515F
	2-1/2" NST (NH)	FM1525F
1-1/2" NST (NH)	1-1/2" NPSH	FM15F15S
	1-1/2" NPT	FM15F15T
	2" NPT	FM15F20T
	2-1/2" NPT	FM15F25T
	2-1/2" NST (NH)	FM15F25F
	1-1/2" NST (NH)	FM15F15F
1-1/2" NPSH	1-1/2" NST (NH)	FM15S15F
	1-1/2" NPT	FM15S15T
	2" NPT	FM15S20T
	1-1/2" NPSH	FM20S15
2" NPSH	1-1/2" NST (NH)	FM20S15F
	1-1/2" NPT	FM20S15T
	2" NPT	FM20S20T
	2-1/2" NST (NH)	FM20S25F
2" NPT	1-1/2" NPSH	FM2015
	1-1/2" NST (NH)	FM2015F
	2" NPSH	FM2020
	2-1/2" NST (NH)	FM2025F
2-1/2" NST (NH)	3/4" NPT	FM25F75T
	1" NPT	FM25F10T
	1-1/2" NST (NH)	FM25F15F
	1-1/2" NPT	FM25F15T
	2" NPT	FM25F20T
	1-1/2" NST (NH)	FM2515F
2-1/2" NPT	2-1/2" NPSH	FM2525
	2-1/2" NST (NH)	FM2525F

FIRE FIGHTING FITTINGS

DOUBLE MALE HEX NIPPLE



MILL & FIRE HOSE



reducer



same size



increaser

JABO #	MALE	MALE	DIXON #
027-16553	2" NPT	2" NPSH	DMH2020
027-16554	2" NPT	2-1/2" NPSH	DMH2025
027-16555	2" NPT	2-1/2" NST (NH)	DMH2025F
027-16601	1-1/2" NPT	1-1/2" NST (NH)	DMH1515F
027-16602	1-1/2" NPT	1-1/2" NPSH	DMH1515
027-16605	1-1/2" NPSH	1-1/2" NPSH	DMH15S15S

Double Male Hex Nipples

Feature

- Other configurations are available, consult Dixon® for information

Male Thread	Male Thread	Cast Brass Part #
3/4" NPT	1-1/2" NPSH	DMH7515
	1-1/2" NST (NH)	DMH7515F
1" NPT	3/4" GHT	DMH1076
	1" NPSH	DMH1010
	1" NST (NH)	DMH1010F
	1-1/2" NPSH	DMH1015
	1-1/2" NST (NH)	DMH1015F
	2-1/2" NST (NH)	DMH1025F
1-1/2" NPSH	1-1/2" NPSH	DMH15S15S
	1" NPSH	DMH1510
1-1/2" NPT	1" NST (NH)	DMH1510F
	1-1/2" NPSH	DMH1515
	1-1/2" NPT	DMH1515T
	1-1/2" NST (NH)	DMH1515F
	2" NPSH	DMH1520
	2-1/2" NST (NH)	DMH1525F
1-1/2" NST (NH)	1-1/2" NPSH	DMH15F15S
	1-1/2" NST (NH)	DMH15F15F
	2-1/2" NST (NH)	DMH15F25F
2" NPT	1-1/2" NPSH	DMH2015
	1-1/2" NST (NH)	DMH2015F
	2" NPSH	DMH2020
	2-1/2" NPSH	DMH2025
	2" NPT	DMH2020T
	2-1/2" NST (NH)	DMH2025F
2-1/2" NPT	1-1/2" NPSH	DMH2515
	1-1/2" NST (NH)	DMH2515F
	2" NPSH	DMH2520
	2-1/2" NPSH	DMH2525
	2-1/2" NST (NH)	DMH2525F
	2-1/2" NPT	DMH2525T
	3" NPSH	DMH2530



reducer



same size

FIRE FIGHTING FITTINGS

CONT FROM PREVIOUS PAGE:



MILL & FIRE HOSE

2-1/2" NST (NH)	3" NPT	DMH2530T
	3" NST (NH)	DMH2530F
	2-1/2" NST (NH)	DMH25F25F
	3" NST (NH)	DMH25F30F
3" NPT	2-1/2" NPSH	DMH3025
	2-1/2" NST (NH)	DMH3025F
	3" NPSH	DMH3030
	3" NST (NH)	DMH3030F
4" NPT	3" NPT	DMH3030T
4" NST (NH)	4" NPSH	DMH4040
4" NPT	4" NST	DMH40F40F
	4" NST (NH)	DMH4040F
	4-1/2" NST (NH)	DMH4045F
5" NPT	4" NPT	DMH4040T
	5" NST (NH)	DMH5050F
6" NPT	4-1/2" NST (NH)	DMH6045F
	6" NST (NH)	DMH6060F
	6" NPSH	DMH6060
	6" NPT	DMH6060T



increaser

FIRE FIGHTING FITTINGS

BRASS FEMALE SWIVEL TO MALE ADAPTER

PIN LUG



JABO #	FEMALE	MALE	DIXON #
027-16604	1-1/2" NPSH	1-1/2 NPT	SM150S
FOR ADDITIONAL FITTINGS SEE DIXON CHART BELOW			

Brass Female Swivel to Male Adapters

Pin Lug

Female NST (NH) Thread	Male NPT Thread	Cast Brass Part #
1-1/2"	1-1/2"	SM150F
2-1/2"	1-1/2"	SM25F15T
	2"	SM25F20T
	2-1/2"	SM250F
	3"	SM25F30T
4"	4"	SM400F



Female NPSH Thread	Male NPT Thread	Cast Brass Part #
1-1/2"	1-1/2"	SM150S
2"	2"	SM200S
2-1/2"	2-1/2"	SM250S

Female Thread	Male NST (NH) Thread	Cast Brass Part #
1-1/2" NPSH	1-1/2"	SM15S15F
2-1/2" NST (NH)	3"	SM25F30F

Female Thread	Male NPT Thread	Cast Brass Part #
1-1/2" NYFD	1-1/2"	SM150NYFD
2-1/2" NYFD	2-1/2"	SM250NYFD

Rocker Lug

Female Thread	Male NPT Thread	Cast Brass Part #
1-1/2" NST (NH)	1-1/2"	RSM150F
1-1/2" NPSH		RSM150S
2-1/2" NST (NH)	2"	RSM25F20T
	2-1/2"	RSM250F
	3"	RSM25F30T



FIRE FIGHTING FITTINGS



(OPEN SNOOT) FEMALE SWIVEL ADAPTER

PIN LUG



MILL & FIRE HOSE

JABO #	FEMALE	FEMALE	DIXON #
027-16603	1-1/2" NPSH	1-1/2" NPT	SF150S
FOR ADDITIONAL FITTINGS SEE DIXON CHART BELOW			

(Open Snoot) Female Swivel Adapters - Pin Lug

Feature

- Other configurations are available; consult Dixon® for information
- Finishes: -P polished, -C polished chrome plated

Specification

- Double female rigid hexagon to swivel connection, rigid end thread is always NPT, hose thread is on swivel end



Female Swivel Thread	Female Rigid Thread	Cast Brass Part #
1-1/2" NST (NH)	1-1/2" NPT	SF150F
1-1/2" NPSH		SF150S
2-1/2" NST (NH)		SF25F15T
2-1/2" NYFD	2" NPT	SF25F20T
2-1/2" NST (NH)	2-1/2" NPT	SF250NYFD
		SF250F
		SF250F-P
		SF250F-C
2-1/2" NPSH	3" NPT	SF250S
2-1/2" NST (NH)		SF25F30T
3" NST (NH)		SF300F
3" NYFD		SF300NYFD
4" NST (NH)	4" NPT	SF400F

FIRE FIGHTING FITTINGS

DOUBLE FEMALE SWIVELS

PIN LUG



MILL & FIRE HOSE

JABO #	FEMALE	FEMALE	DIXON #
027-16606	1-1/2" NPSH	1-1/2" NPT	DEP1515
FOR ADDITIONAL FITTINGS SEE DIXON CHART BELOW			

Double Female Swivels

Pin Lug

Female NPSH Thread	Female NPSH Thread	Cast Brass Part #
1-1/2"	1-1/2"	DFP1515
2-1/2"	2-1/2"	DFP2525

Female NST (NH) Thread	Female NST (NH) Thread	Cast Brass Part #
1-1/2"	1-1/2"	DFP1515F
2-1/2"	2-1/2"	DFP2525F

Female NST (NH) Thread	Female NPSH Thread	Cast Brass Part #
1-1/2"	1-1/2"	DFP15F15S
2-1/2"	2-1/2"	DFP25F25S

Female NYFD Thread	Female NYFD Thread	Cast Brass Part #
1-1/2"	1-1/2"	DFP15NYFD15NYFD
2-1/2"	2-1/2"	DFP25NYFD25NYFD



FIRE FIGHTING FITTINGS

HYDRANT ADAPTERS

ROCKER LUG



MILL & FIRE HOSE



reducer



same size

JABO #	FEMALE	MALE	DIXON #
027-16608	2-1/2" NST (NH)	1-1/2" NST (NH)	RHA2515F
027-16609	1-1/2" NPSH	1-1/2" NPT	RHA1515T
FOR ADDITIONAL FITTINGS SEE DIXON CHART BELOW			

Hydrant Adapters - Rocker Lug

Feature

- Other configurations are also available, consult Dixon® for information
- Finishes: -C polished chrome plated

Female Thread	Male Thread	Cast Brass Part #
1-1/2" NST (NH)	3/4" NST (NH)	RHA1576
	1" NST (NH)	RHA1510
	1" NST (NH)	RHA1510F
	1" NPT	RHA1510T
	1-1/2" NPSH	RHA1515
	1-1/2" NST (NH)	RHA1515F
	1-1/2" NPT	RHA1515T
	2" NPSH	RHA1520
1-1/2" NPSH	2-1/2" NST (NH)	RHA1525F
	3/4" NPT	RHA15S75T
	1" NPSH	RHA15S10
	1" NPT	RHA15S10T
	1-1/2" NST (NH)	RHA15S15F
1-1/2" NPT	1-1/2" NPT	RHA15S15T
2" NST (NH)	1-1/2" NST (NH)	RHA15T15F
	2-1/2" NST (NH)	RHA2025F
2-1/2" NST (NH)	3/4" GHT	RHA2576
	1" NPSH	RHA2510
	1" NST (NH)	RHA2510F
	1" NPT	RHA2510T
	1-1/2" NPSH	RHA2515
	1-1/2" NST (NH)	RHA2515F
	1-1/2" NPT	RHA2515T
	2" NST (NH)	RHA2520F
	2" NPT	RHA2520T
	2-1/2" NPT	RHA2525T
2-1/2" NPSH	3" NPT	RHA2530T
	1-1/2" NPSH	RHA25S15
	1-1/2" NST (NH)	RHA25S15F
	2-1/2" NPT	RHA25T25F
3" NST (NH)	2-1/2" NST (NH)	RHA3025F



reducer



reducer - chrome plated



same size

