

MATERIAL HANDLING HOSE



# JABO SUPPLY CORPORATION

JABO CAN ASSEMBLE ANY HOSE IN OUR 9,000 SQ FT HOSE SHOP

MATERIAL HANDLING



**NEW  
PRODUCT**



## MATERIAL HANDLING

# JABO SUPPLY



## 5 LOCATIONS

### **PARKERSBURG, WV**

10085 Emerson Avenue 26102  
(304) 464-4400

### **MORGANFIELD, KY**

118 Jim Veatch Road, 42437  
(270) 389-3430

### **HUNTINGTON, WV**

209 Braley Street, 25705  
(304) 736-8333

### **NORTON, VA**

205 Hawthorne Drive, 24273  
(276) 679-1224

### **BEAVER, WV (BECKLEY)**

227 C&O Shop Road 25813  
(304-252-0000

SINCE 1964 SERVICE IS MORE THAN A PROMISE

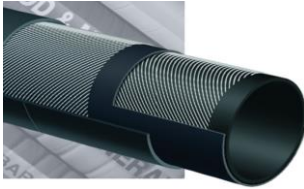
MATERIAL HANDLING

POWDER DELIVERY HOSE

MATERIAL HANDLING

HEAVY DUTY DRY POWDER  
DELIVERY HOSE

150 PSI



# T766AA Series

## 150 PSI Heavy Duty Dry Powder Delivery Hose

JABO PART#	SIZE	WORKING PSI
034-10150	4"	150
<i>*Non Stock - Call Jabo Supply</i>		

**Working Pressure:**

Constant Pressure – 10 Bar (150 PSI)

**Service Temperature Range:**

-22°F (-30°C) to +176°F (+80°C)

**General Applications:**

Discharge of dry powders in heavy duty applications, such as dry cement, grains and animal feed transfer.

**Construction:**

**Tube:** 1/4" black static conducting NR – compounded to resist cutting by abrasive materials.

**Reinforcement:** Spiraled high tensile textile cords.

**Cover:** Black conductive SBR/NR blend – abrasion and ozone resistant.

### Nominal Specifications

Series Number	ID (in)	ID (mm)	OD (in)	OD (mm)	Max Rec. WP (psi)	Standard Length (ft)	Weight (lbs/ft)
T766AA400	4	102	4.65	118	150	100	1.96



## Material Handling



**NEW  
PRODUCT**

### THE BOOMER™ T704HA Series **CORRUGATED** Industrial Sewer Vacuum Hose

#### General Applications:

- Material handling suction/discharge.
- Industrial vacuum equipment applications.
- Great hose for dry or wet abrasive materials.
- Popular hose for vacuum truck industry where a rugged and durable hose product is needed.
- Drill cutting suction hose in mobile drilling rigs.

#### Construction:

- **Tube** - 1/4" thick red gum rubber tube for abrasion-resistance.
- **Reinforcement** - High tensile textile fabric with embedded steel helical wire.
- **Cover** - Corrugated black conductive SBR/NR blend cover for abrasion and ozone-resistance.

**Service Temperature Range:**  
-40°F (-40°C) to +212°F (+100°C)

#### Branding:

ALFAGOMMA ITALY 10 bar (150 psi) HEAVY  
DUTY INDUSTRIAL VACUUM S&D

#### Features and Advantages:

**Abrasion Resistant Tube** – 1/4" gum rubber tube designed for wet or dry applications where severe abrasion is a factor. Provides for long hose service life.

**Heavy Duty Construction** – Thick tube and cover, high tensile strength fabric and durable steel helix wire designed for high pressure and vacuum application. All sizes rated to full vacuum, and PSI safety factor 3:1 (2"-8") and 2.5:1 (10").

**Grounding Wire** – Steel wire helps prevent the build-up of static electricity and to help keep material flowing smoothly.†

**Corrugated Outer Cover** – Provides increased hose flexibility.

**"Cold-Flex" Materials** – Hose remains flexible in sub-zero temperatures.

**Cuffed Ends Available** – Available with soft cuffed ends for easy installation and clamping.

#### Nominal Specifications

Series Number	ID (in)	ID (mm)	OD (in)	OD (mm)	Max Rec. WP (psi)	Vacuum HG (in)	Min. Bend Radius (in at 68°F)	Standard Length Coils (ft)	Weight (lbs/ft)
T704HA200	2	51	2.87	69	150	30	6	100	1.41
T704HA300	3	76	3.69	96	150	30	9	100	2.40
T704HA400	4	102	5.03	122	150	30	12	100	3.39
T704HA500	5	127	6.22	149	150	30	15	100	4.31
T704HA600	6	152	7.04	174	150	30	24	100/50	5.13
T704HA800	8	203	9.00	227	150	30	32	100/50/35	9.26
T704HA1000	10	254	11.22	283	150	30	40	35	13.82

† Caution: This product is designed to help dissipate static electricity when the metal wire is properly connected to ground, through the fitting or other means.

#### COUPLING SUGGESTIONS

Quick-Acting, pin lug, short shank couplings or combination nipples attached with single bolt, double bolt, wire or band type clamps.

★ Kuriyama offers a full line of Quick-Acting couplings, pin lug shank couplings and combination nipples. Refer to current Kuriyama-Couplings™ and Accessories Catalog for type and pricing.

BECAUSE WE CONTINUALLY EXAMINE WAYS TO IMPROVE OUR PRODUCTS, WE RESERVE THE RIGHT TO ALTER SPECIFICATIONS OR DISCONTINUE PRODUCTS WITHOUT PRIOR NOTICE.

**JABO NON-STOCK- ASK for the 704HA BOOMER HOSE**



# MATERIAL HANDLING HOSE

## MOST COMMONLY USED HOSE ENDS

MATERIAL HANDLING HOSE

### CAMLOCKS

MALE CAM X HOSE BARB



FEMALE CAM X HOSE BARB



Available in Zinc, SS, Polypropylene

### PIPE THREADS

KING NIPPLE X HOSE BARB



Available in Zinc & SS

### VICTAULIC



Available in 316 SS, Galvanized

### FLANGES

FLOATING FLANGE



FIXED FLANGE



Available in Carbon Steel, SS 304, SS 316

### CHICAGO STYLE COUPLING



Available in Zinc

### FABRICATION



MATERIAL HANDLING

SAND BLAST HOSE

SAND BLAST HOSE

STOCK BLACK T753AA



# T753AA / T753AG

Formerly T750AA/T750AG

## 180 PSI 4-Ply Abrasive Material Blast Hose

**T753AA**  
Black Cover

**T753AG**  
Green Cover

JABO PART#	SIZE	MAX REC WP (PSI)
034-10145	3/4"	180
*	1"	180
*	1-1/4"	180
*	1-1/2"	180
*	2"	180

*\*Non Stock - Call Jabo Supply*

### General Applications:

Designed to convey abrasives, sand and shot blast material.

### Construction:

**Tube:** Black static conducting natural rubber – offering excellent abrasion resistance, upgraded to 50mm<sup>3</sup> (cubed) rating.

**Reinforcement:** High tensile textile cords – 4-ply construction.

**Cover:** Black or green, conductive SBR/NR blend – abrasion and ozone resistant – pin pricked.

### Working Pressure:

Constant Pressure – 12 Bar (180 PSI)

### Service Temperature Range:

-22°F (-30°C) to +176°F (+80°C)

### Branding:

ALFAGOMMA – ITALY – 753 12 BAR (180 PSI)  
PREMIUM ABRASIVE MATERIAL BLAST Ω (in white letters)

## Nominal Specifications

Series Number	ID (in)	ID (mm)	OD (in)	OD (mm)	Tube Thickness (mm)	Max Rec. WP (psi)	Standard Length (ft)	Weight (lbs/ft)
T753AA/AG075	3/4	19	1.50	38	0.236	180	50/100	0.68
T753AA/AG100	1	25	1.89	48	0.283	180	50/100	1.04
T753AA/AG125	1 1/4	32	2.17	55	0.283	180	50/100	1.23
T753AA/AG150	1 1/2	38	2.36	60	0.260	180	50/100	1.40
T753AA200	2	51	2.87	73	0.260	180	50/100	1.77

HOSE ID (in)	HOSE ENDS	NOZZLE HOLDERS	THREADED FEMALE ADAPTER	GASKETS
3/4	Q-AL1, Q-BR1, Q-PI1	NH-AL1, NH-BR1	–	SBG
1	Q-AL2, Q-BR2, Q-PI2	NH-AL2, NH-BR2	–	SBG
1 1/4	Q-AL3, Q-BR3, Q-PI3	NH-AL3, NH-BR3	SB-AL1, SB-BR1	SBG
1 1/2	Q-AL4, Q-BR4, Q-PI4	NH-AL4, NH-BR4	SB-AL2, SB-BR2	SBG

# MATERIAL HANDLING HOSE

## MATERIAL HANDLING

### SAND BLAST COUPLING/NOZZLE HOLDER OPTIONS

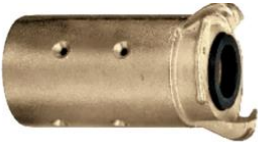
ALUMINUM 2 LUG HOSE COUPLING



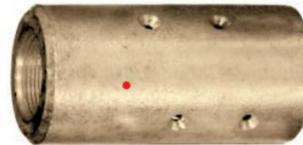
ALUMINUM NOZZLE HOLDER (NPS THREADS)



BRASS 2 LUG HOSE COUPLING



BRASS NOZZLE HOLDER (NPS THREADS)



PLATED IRON 2 LUG HOSE COUPLING



ALUMINUM TWO LUG FEMALE THREADS  
COUPLING (NPT THREADS)



BRASS TWO LUG FEMALE THREADED  
COUPLING (NPT THREADS)



**JABO MAY USE MORE THAN  
ONE SOURCE FOR  
SANDBLAST COUPLINGS**

PLEASE LET YOUR CUSTOMER SERVICE REPRESENTATIVE  
KNOW IF YOU HAVE A PREFERENCE WITH A  
MANUFACTURER

SANDBLAST COUPLING GASKET



**Natural Rubber Gasket for Sandblast Couplings**  
Temperature Rating -60°F (-51°C) to 220°F (+104°C)

Part Number	Weight Each (lbs.)	Standard Carton
SBG	0.032	10