



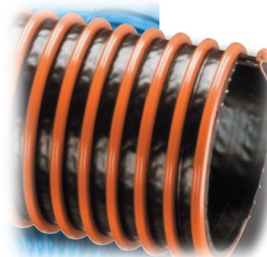
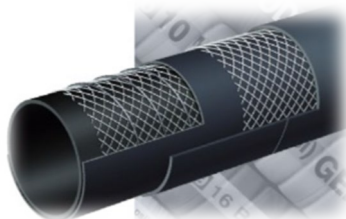
JABO SUPPLY CORPORATION

PETROLEUM HOSE

JABO CAN ASSEMBLE ANY HOSE IN OUR 9,000 SQ. FT. HOSE SHOP



PETROLEUM HOSE



JABO SUPPLY



5 LOCATIONS

PARKERSBURG, WV

10085 Emerson Avenue 26102
(304) 464-4400

MORGANFIELD, KY

118 Jim Veatch Road, 42437
(270) 389-3430

HUNTINGTON, WV

209 Braley Street, 25705
(304) 736-8333

NORTON, VA

205 Hawthorne Drive, 24273
(276) 679-1224

BEAVER, WV (BECKLEY)

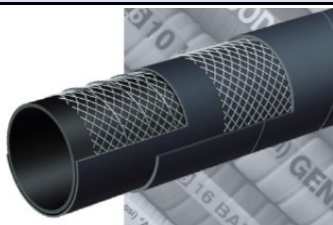
227 C&O Shop Road 25813
(304-252-0000

SINCE 1964 SERVICE IS MORE THAN A PROMISE

PETROLEUM

T604AA PETROLEUM HOSE

OIL RETURN HOSE



JABO PART#	SIZE	WORKING PSI 68F/104F
*	3/4"	300
034-10112	1"	250
034-10113	1-1/4"	200
*	1-1/2"	150
*	2"	100
*NON Stock-Call Jabo Supply		

T604AA Series

Flexor – SAE 100 R4 Oil Return Hose

General Applications:

Low pressure return lines or suction lines with half the bend radius requirements of SAE J517 100 R4, service with petroleum based hydraulic fluids, water-glycol and water-fire resistant hydraulic fluids, oil, lubricants, crude oil, fuel oils and water.

Construction:

Tube: Black conductive NBR.

Reinforcement: High tensile textile cords with flexible steel helix wire.

Cover: Black CR – oil, fuel, weather, ozone and abrasion-resistant.

Service Temperature Range:

-40° F (-40° C) to +212° F (+100° C) constant operation

Maximum operating temperature: +257° F (+125° C).

Air maximum temperature: 175° F (80° C).

Note: Operating temperatures in excess of 212° F (+100° C) may materially reduce the life of the hose.

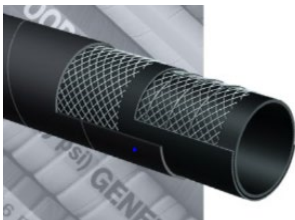
Nominal Specifications

Series Number	ID (in)	ID (mm)	OD (in)	OD (mm)	Max Rec. WP (psi)	Vacuum HG (in)	Min. Bending Radius at 68°F (in)	Standard Length (ft)	Weight (lbs/ft)
T604AA075	3/4	19	1.14	29	300	30	2 1/4	100	0.41
T604AA100	1	25	1.38	35	250	30	3	100	0.52
T604AA125	1 1/4	32	1.65	42	200	30	3 3/4	100	0.61
T604AA150	1 1/2	38	1.89	48	150	30	4 1/2	100	0.70
T604AA200	2	51	2.40	61	100	30	6	100	0.90

PETROLEUM

T605AA PETROLEUM HOSE

OIL RETURN HOSE



JABO PART#	SIZE	WORKING PSI
*	3/4"	150
*	1"	150
*	1-1/4"	150
034-10119	1-1/2"	150
034-10120	2"	150
034-10125	2-1/2"	150
034-10130	3"	150
034-10140	4"	150
034-10142	6"	150
*	8"	150

**Non Stock - Call Jabo Supply*

T605AA Series

150 PSI Black Petroleum S & D Hose

General Applications:

For suction and discharge applications in truck and tank car transfer of gasoline, oil and other petroleum-based products with up to 50% aromatic content.

Construction:

Tube: Black conductive NBR.

Reinforcement: High tensile textile cords with flexible steel helix wire.

Cover: Black CR – abrasion, ozone and hydrocarbon resistant.

Working Pressure:

Constant Pressure – 10 Bar (150 PSI)

Service Temperature Range:

-22°F (-30°C) to +176°F (+80°C)

T605 IS NOT RECOMMENDED FOR USE ON A REEL.

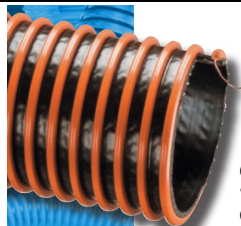
Nominal Specifications

Series Number	ID (in)	ID (mm)	OD (in)	OD (mm)	Max Rec. WP (psi)	Vacuum HG (in)	Min. Bending Radius at 68°F (in)	Standard Length (ft)	Weight (lbs/ft)
T605AA075	3/4	19	1.14	29	150	30	3	100	0.41
T605AA100	1	25	1.38	35	150	30	4	100	0.52
T605AA125	1 1/4	32	1.65	42	150	30	5	100	0.61
T605AA150	1 1/2	38	1.89	48	150	30	6	100	0.71
T605AA200	2	51	2.40	61	150	30	8	100	0.91
T605AA250	2 1/2	63	2.95	75	150	27	10	100	1.42
T605AA300	3	76	3.54	90	150	27	12	100	1.75
T605AA400	4	102	4.65	118	150	27	16	100	2.56
T605AA600	6	152	6.69	170	150	24	24	20/100	4.95
T605AA800	8	203	8.86	225	150	21	32	20	7.87

PETROLEUM

NDH

NDH WITH GROUND WIRE



JABO PART#	SIZE	WORKING PSI 68F/104F
*	2"	75/40
034-10160	3"	70/35
034-10162	4"	65/30
*Non Stock - Call Jabo Supply		

Tigerdrop™ NDH™

Drop Hose
NDH™ Series
Black static
dissipating tube

General Applications:

- Tank truck gravity drop fuel transfer

Construction:

Specially blended nitrile (NBR) rubber tube with polyester fabric reinforcement, rigid PVC helix and embedded grounding wire.

Service Temperature Range:

-10°F (-23.3°C) to +150°F (+65.5°C)*

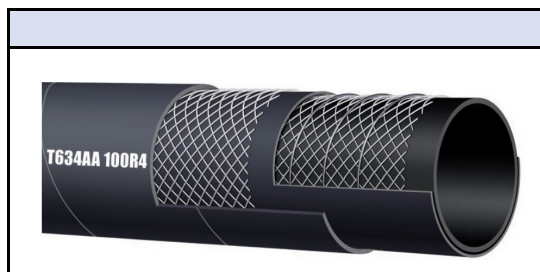
PETROLEUM HOSE

Nominal Specifications

Series Number	ID		OD^		Working Pressure (psi)		Vacuum Rating (in Hg)		Min Bending Radius (in at 68°F)	Standard Length (ft)	Weight (lbs/ft)
	(in)	(mm)	(in)	(mm)	68°F	104°F	68°F	104°F			
NDH202	2.02	51.3	2.60	66.0	75	40	Full	27	5	100/20	0.80
NDH303	3.03	77.0	3.69	93.7	70	35	Full	27	6	100/20	1.24
NDH404	4.04	102.6	4.78	121.4	65	30	Full	27	8	100/57/20	2.00

PETROLEUM

634AA / TR4XF EXTRA FLEXIBLE



JABO PART#	SIZE	WORKING PRESSURE
035-20340	3/4"	300
035-20341	1"	250
*	1-1/4"	200
*	1-1/2"	150
*	2"	100
*	2-1/2"	60
*	3"	60
*Non Stock - Call Jabo Supply		

Construction:

Tube – Black, conductive NBR.

Reinforcement – Textile reinforced with four spiral wire helix to prevent collapsing.

Cover – Black CR... oil, fuel, weather, ozone and abrasion-resistant.

T634AA – Textile reinforced with four spiral wire helix to prevent collapsing

Meets or exceeds SAE 100R4

General Applications:

Low pressure return lines or suction lines with half the bend radius requirements of SAE J517 100R4, service with petroleum based hydraulic fluids, water-glycol and water-fire resistant hydraulic fluids, oil, lubricants, crude oil, fuel oils and water.

Service Temperature Range:

-40°F (-40°C) to +212°F (+100°C) constant operation.

Maximum operating temperature:

+257°F (+125°C)

Air maximum temperature: +175°F (+80°C)

Note: Operating temperatures in excess of +212°F (+100°C) may materially reduce the life of the hose.

Branding:

ALFAGOMMA – Italy – T634 (psi) - SAE 100R4 - (SIZE) - Date

Nominal Specifications

Series Number	Size Code	ID		OD		Max. Working Pressure [†] (psi)	Min. Bend. Radius		Weight (lbs/ft)	Coupling Recommendations	
		(in)	(mm)	(in)	(mm)		(in)	(mm)		Two-Piece	Ferrule Non-Skive
TR4XF	12	3/4	19.1	1.18	30.0	300	1.5	38.1	0.41	AFX	
TR4XF	16	1	25.4	1.42	36.0	250	2.0	50.8	0.51	AFX	
TR4XF	20	1 1/4	31.8	1.69	43.0	200	2.5	63.5	0.62	AFX	
TR4XF	24	1 1/2	38.1	1.93	49.0	150	3.0	76.2	0.72	AFX	
TR4XF	32	2	50.8	2.44	62.0	100	4.0	101.6	0.93	AFX	
TR4XF	40	2 1/2	63.0	2.99	76.0	60	4.9	125.0	1.47		
TR4XF	48	3	76.0	3.50	89.0	60	5.9	152.0	1.75		

MOST COMMONLY USED HOSE ENDS

CAMLOCKS

MALE CAM X HOSE BARB



FEMALE CAM X HOSE BARB



Available in Zinc, SS, Polypropylene

PIPE THREADS

KING NIPPLE X HOSE BARB



Available in Zinc & SS

VICTAULIC



Available in 316 SS, Galvanized

FLANGES

FLOATING FLANGE



FIXED FLANGE



Available in Carbon Steel, SS 304, SS 316

CHICAGO STYLE COUPLING



Available in Zinc

FABRICATION

